

Vertical Blinds should be manufactured using the Vogue System with aluminium headrail 38.5mm x 28mm and include carrier trucks with UV stabilised self-aligning hooks.
The operating chain should be No 6 size metal to ensure reliable performance. The brackets used should be made from mild steel, zinc plated and powder coated and be suitable for top or face fixing.
The material used for the vertical louver will be creased and punched so that a UV stabilised hanger – also with a hole – can be stitched or welded into the top of the louver.

General applications

Vertical blinds incorporating the Vogue headrail system provide a contemporary and extremely practical commercial installation and are available from approved manufacturers worldwide. It is a robust and reliable system that has been specified for over 25 years.
The system is easily fitted and provides an extremely efficient method of light control. A large range of attractive flame retardant fabrics, and some featuring anti-glare SPC® and blackout coatings make these blinds the ideal choice for projects large or small.
The fabrics are designed specifically for window blinds.

Headrail

The Vogue aluminium headrail extrusion is made from prime aluminium and is available in white and brown powder coated, silver anodised or polished black and champagne, which makes it corrosion resistant.
Brackets are zinc plated or powder coated and manufactured with a strengthening crease for increased strength and safety.

Carrier Trucks

To ensure a positive and smooth operation within the headrail, all carriers are manufactured using prime quality plastic materials.
This also provides durability and protection from embrittlement and UV rays.
The gears in the carrier trucks that rotate the louvres are self-aligning with limit stops. This allows louver rotation to 185°, which ensures an efficient closure without strain on the mechanism.
The spacing between the carrier trucks is controlled by high-grade stainless steel spacer links. The standard spacing is either 77mm for 89mm louvers or 115mm for 127mm louvers, although alternative spacing options are available.
UV stabilised louver hangers are manufactured using Nylon No. 6 plastic.

Operation

Operation is by either No 6 size chain or a tilt and draw wand control.
Vogue tracks are smooth running and robust. The components are made in aluminium, prime plastic or stainless steel.
The design of the components minimises damage caused by operator misuse.

Maintenance

All of the Vogue components are manufactured using aluminium, plastic or stainless steel. They do not present any corrosion problems in normal environments. The system has been designed for a smooth operation, together with a rigidity to prolong the window blind's working life. However any damage which does occur, can normally be rectified on site.

Louvres

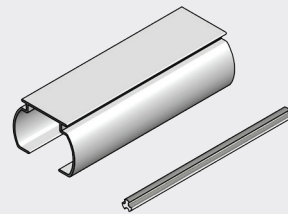
Available as 89mm or 127mm width. All louvres are weighted and interlinked, front and back with ball and 'C' clip connectors.



VOGUE SYSTEM VERTICAL BLIND

Vogue Components

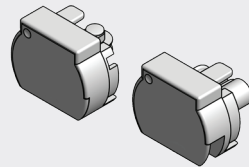
Headrail Section



Slimline Vogue® Headrail
Product specification
100% aluminium
Dimensions: 38.5mm (1 1/2") x 28mm (1 1/8")
Lengths: 5m (5.5 yard) maximum
Colour: white, brown, silver, gold or black

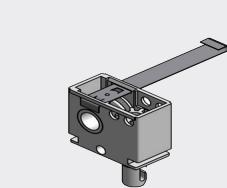
Tilt Rod
Product specification Aluminium

End Cap



Slimline Vogue® End Caps
Product specification Nylon
Dimensions: 38.5mm (1 9/16") x 27.34mm (1 1/8")
Colour: white, brown or black

Carrier Trucks

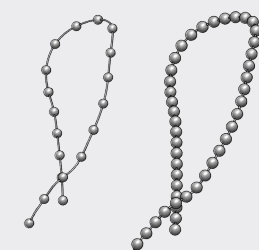


Spade Hook, self-aligning, 89mm or 127mm
For use with stainless steel spacer links

Spade Hook, fixed gear, 89mm or 127mm
For use with stainless steel spacer links

Product specification
Truck Body: nylon, link: stainless steel
Dimensions: 24mm x 32mm x 12mm
Colour: white, brown or black

Rotation Chain



Available in nickel plated brass, or plastic. The pitch of the operating chain is designed to provide a smooth and silent operation. Available in a variety of colours, each chain system has a variety of connector units to allow for child safe operation where required.

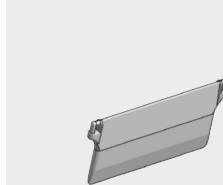
Product specification
Acetal ball - colour: white, brown or black, Zinc plated - colour: silver. Easy break chain connector for child safety

Stabalising Chain with C Clip



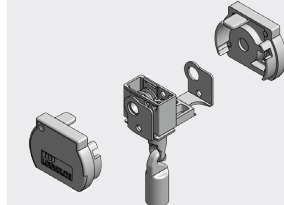
Product specification
Plastic
Sizes: 89mm, 127mm
Colour: white (plastic) or Zinc plated - colour: silver.

Louvre Ballast Weights



Ballast Weights, Moulded, Compact
89mm, 127mm
Product specification
Colour: white

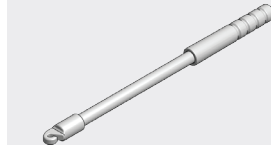
Slimline Vogue Monocommand



Alternative wand control - Child Safety Product

Product specification
Colour: white, brown or black

Slimline Vogue Monocommand wand



Available in lengths: 800mm, 1200mm or 2000mm

Product specification
Colour: white or black

Cord Weights



Product specification
Colour: white

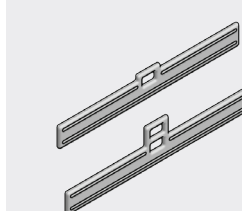
Cord Tidies



Double Cord & Chain Tidy

Product specification
Colour: white, brown or black

Louvre Inserts

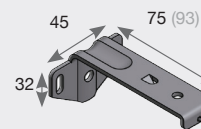


Double Slotted Hole, Plastic
89mm, 127mm

Product specification
Colour: white

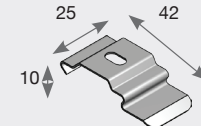
Bracket Options

2 Brackets required for blinds up to 1 metre width,
1 further bracket required for every additional metre.



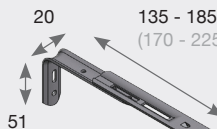
Shallow frame face fix brackets, 89mm or 127mm
Product specification
Mild steel, zinc plated and powder coated
Colour: white or brown

Dimensions: 45mm (1 1/2") x 32mm (1 1/4") x 75mm (3") for 89mm (3 1/2") louvres
45mm (1 1/2") x 32mm (1 1/4") x 93mm (3 1/2") for 127mm (5") louvres



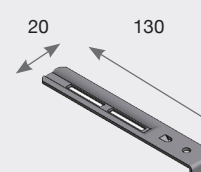
Top fix brackets, screw
Product specification
Mild steel, zinc plated and powder coated
Colour: white, brown or silver

Dimensions: 25mm (1") x 10mm (3/8") x 32mm (1 1/4")



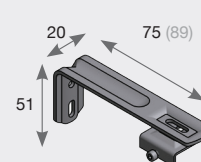
Adjustable face fix brackets, 135mm - 185mm or 170mm - 225mm
Product specification
Mild steel, zinc plated and powder coated
Colour: white

Dimensions: short arm 20mm (3/4") x 51mm (2") x 135 - 185mm (5 1/4" x 7 1/4"),
long arm 20mm (3/4") x 51mm (2") x 170 - 225mm (6 3/4" x 8 6/8")



Extension Top fix brackets
Product specification
Mild steel, zinc plated and powder coated
Colour: white

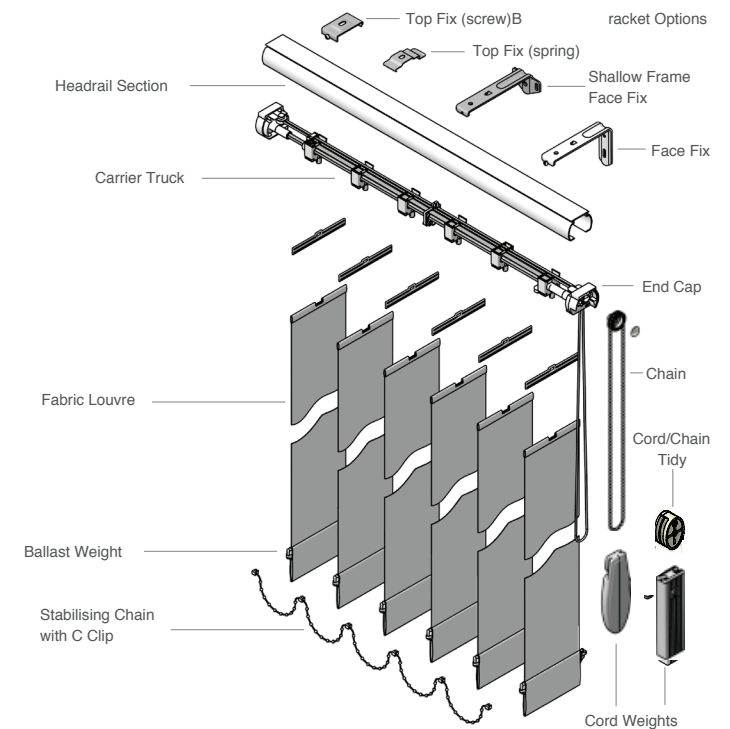
Dimensions: short arm 20mm (3/4") x 130mm (5 1/8")
long arm 20mm (3/4") x 165mm (6 1/2")



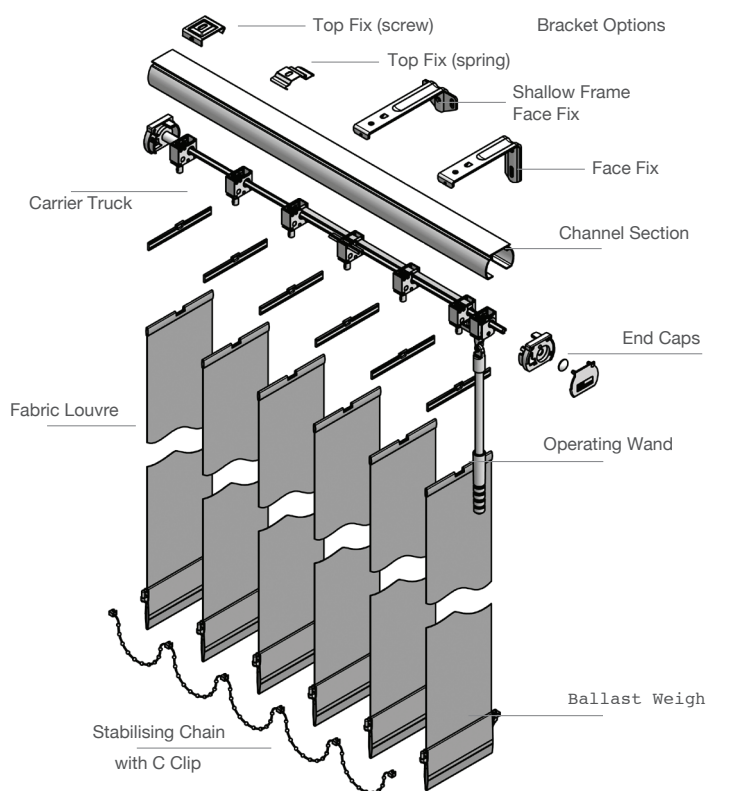
Side fix brackets, 89mm or 127mm
Product specification
Mild steel, zinc plated and powder coated
Colour: silver

Dimensions: 20mm (3/4") x 51mm (2") x 75mm (3") for 89mm (3 1/2") louvres,
20mm (3/4") x 51mm (2") x 89mm (3 1/2") for 127mm (5") louvres

Vogue System With Cord & Chain Operation



With Monocommand Wand Operation



Vogue Bracket Dimensions

Shallow Frame Face Fix Brackets

Top Fix Brackets (screw)

Top Fix Brackets (spring)

Adjustable Face Fix Brackets

Extension Top Fix Brackets

Side Fix Brackets

Shaped Blind Options

ANGLED TOP

ANGLED BOTTOM

CURVED BOTTOM

SHAPED

STEPPED BOTTOM EDGE

Bunching Options and Stacking Distances

ONE WAY BUNCH

CENTRE BUNCH

SPLIT BUNCH

Bunching	89mm (31/2") Louvres	127mm (5") Louvres
One Way	225mm (83/4") for 1st metre (3'3") width of blind. 175mm (7") for each additional metre	190mm (71/2") for 1st metre (3'3") width of blind. 115mm (41/2") for each additional metre
Split	225mm (8 3/4") for 1st metre (3'3") width of blind. 175mm (7") for each additional metre	135mm (51/2") for 1st metre (3'3") width of blind. 55mm (21/4") for each additional metre
Centre	165mm (61/2") for 1st metre (3'3") width of blind. 165mm (61/2") for each additional metre	115mm (41/2") for 1st metre (3'3") width of blind. 115mm (41/2") for each additional metre