

Blindtex Custom Shutter Specification				
Code	ERSH-008	2014 Bi-fold Track	Page	1 / 26
Edition	Q		Compiler	
Effective Date	2017/07/11		Reviewer	

Revision Log

Edition	Effective Date	Remark
P	2017/05/16	Update the Panel configuration drawing for frame hinged bifold (not to show the panel hanger location)
Q	2017/07/11	Change Illumin8 to Blindtex

Blindtex Custom Shutter Specification				
Code	ERSH-008	2014 Bi-fold Track	Page	2 / 26
Edition	Q		Compiler	
Effective Date	2017/07/11		Reviewer	

Track Shutters—180⁰ Bi-fold

Guidelines and Specs:

Material: available for all shutter materials.

Stile: 50.8mm, 57.1mm rabbet and butt stiles are available,
Center stile is not available.

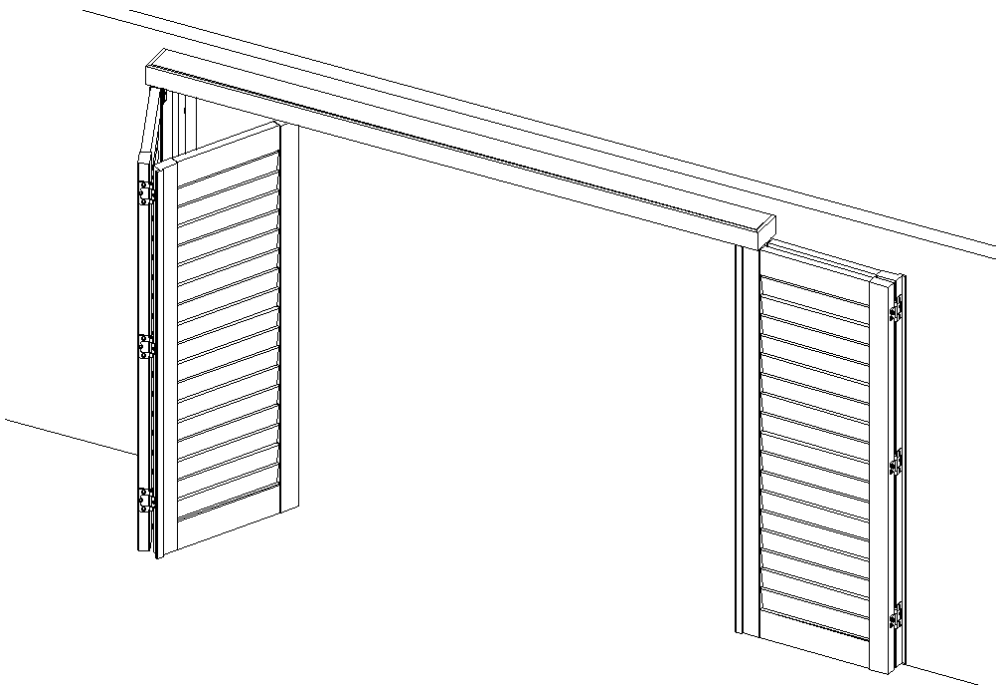
Panel size limitation: same as the regular shutter spec.

Size Definition:

Outside Mount

Max frame-to-frame width: window width + 89mm

Max frame-to-frame height: window height + 114.3mm

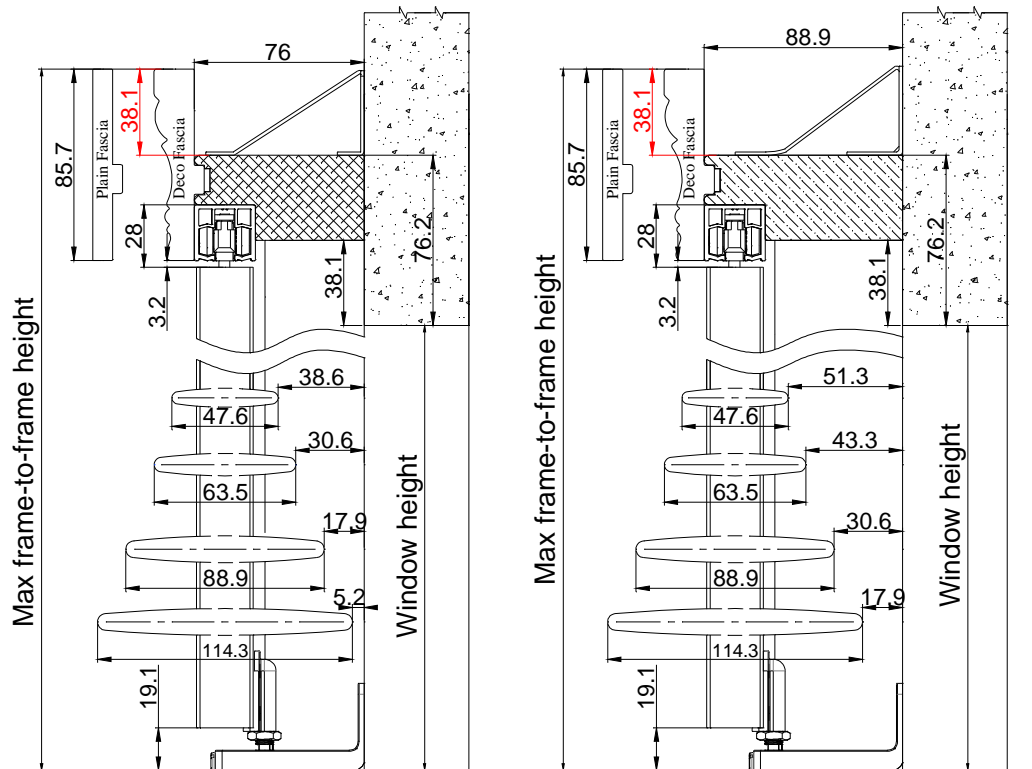


Track is pre-installed on the header; standard 1 track only.

Blindtex Custom Shutter Specification				
Code	ERSH-008	2014 Bi-fold Track	Page	3 / 26
Edition	Q		Compiler	
Effective Date	2017/07/11		Reviewer	

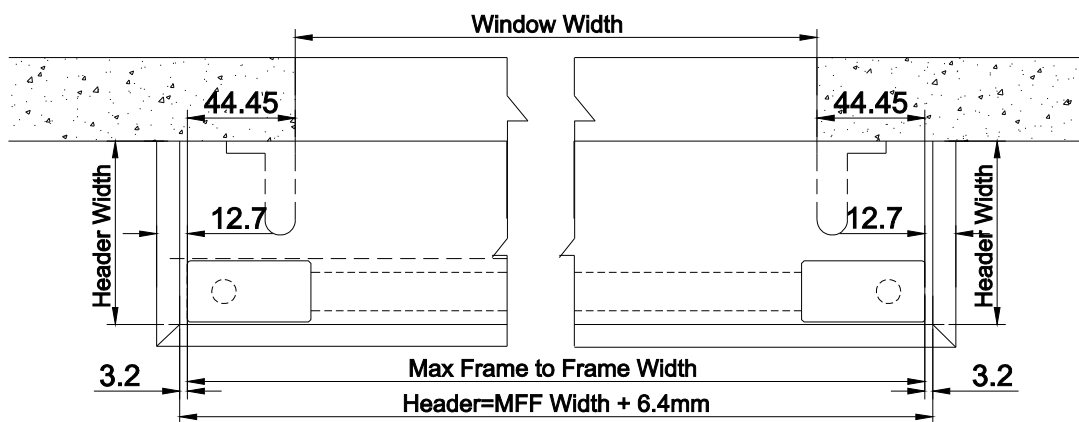
Mounting Options: Outside Mount only

Mounting Options: Outside Mount only



Without Casing **Top View**

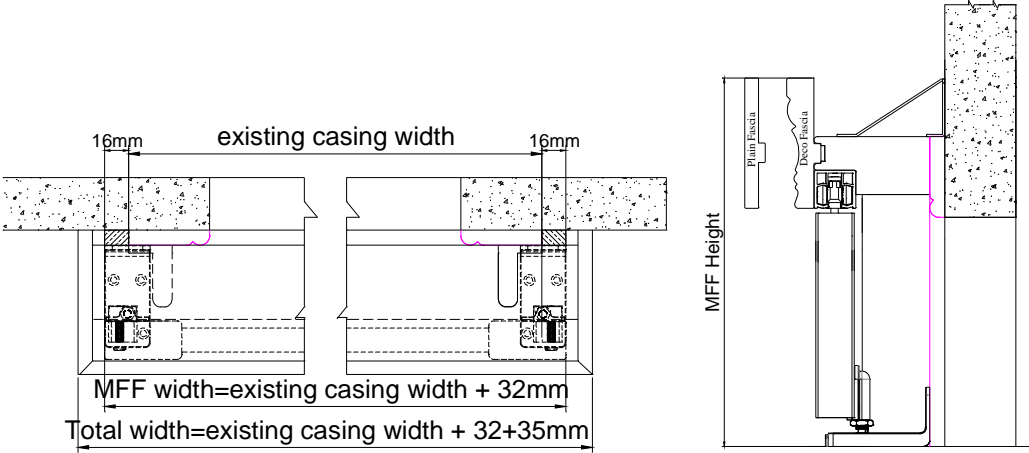
Without Casing **Top View**



Fascia return will protrude the panel about 12.7mm for each side.

Blindtex Custom Shutter Specification				
Code	ERSH-008	2014 Bi-fold Track	Page	4 / 26
Edition	Q		Compiler	
Effective Date	2017/07/11		Reviewer	

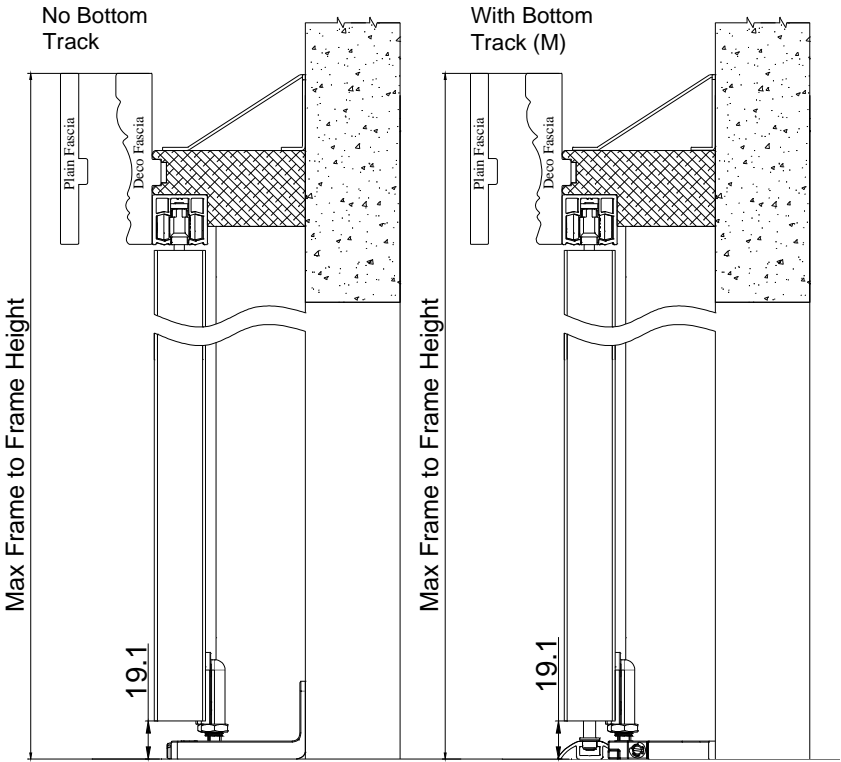
With Existing Casing



- ✧ Bottom Track: Optional.
- ✧ For multi-fold panels, it is suggested to be with bottom track.

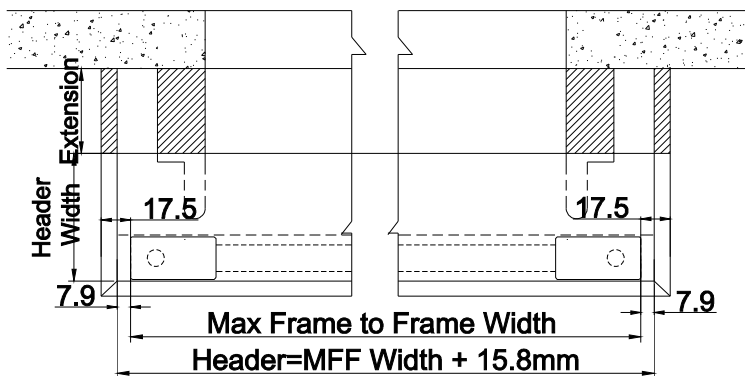
No Bottom Track

With Bottom Track

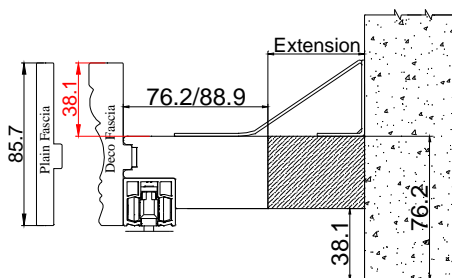


Blindtex Custom Shutter Specification				
Code	ERSH-008	2014 Bi-fold Track	Page	5 / 26
Edition	Q		Compiler	
Effective Date	2017/07/11		Reviewer	

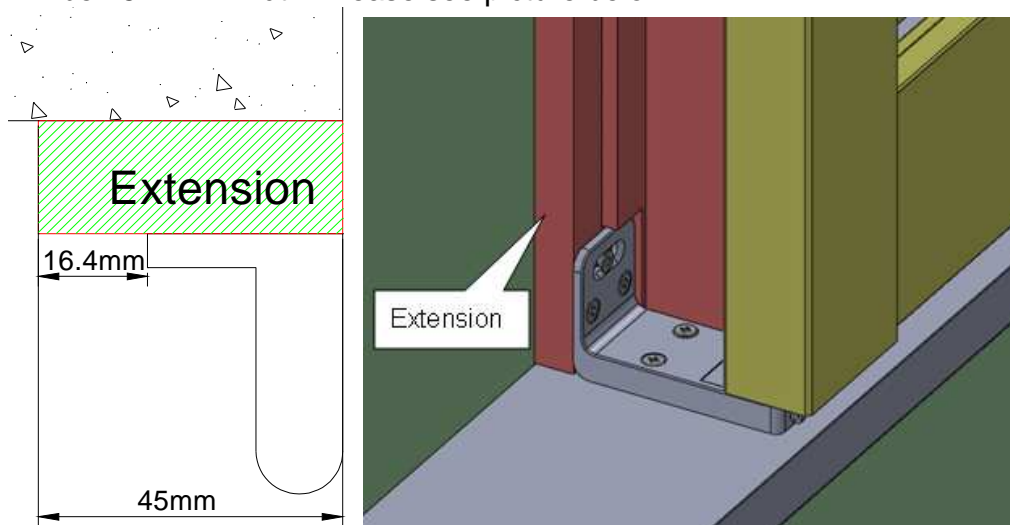
- ◇ Header Extension: Optional
- ◇ Custom extension up to 50.8mm for Header
- ◇ When extension is needed, the header will protrude the panel 7.9mm for each side and the fascia return will protrude the panel 17.5mm for each side.



- ◇ The extension will be pre-attached.

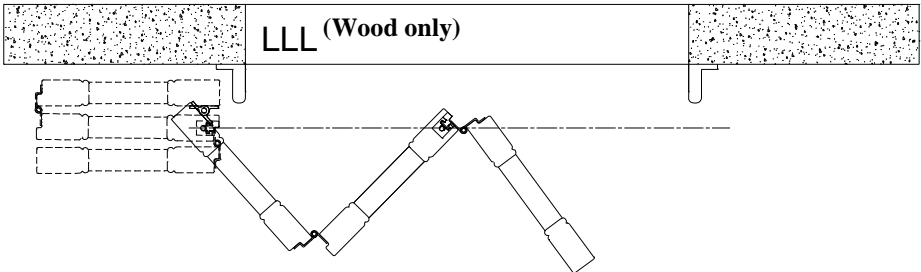
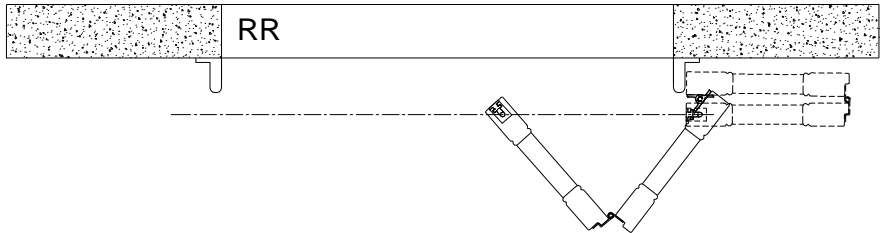
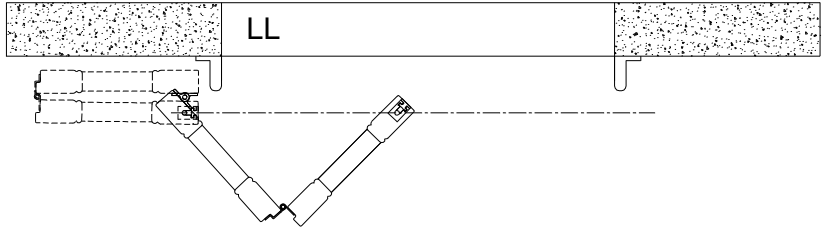
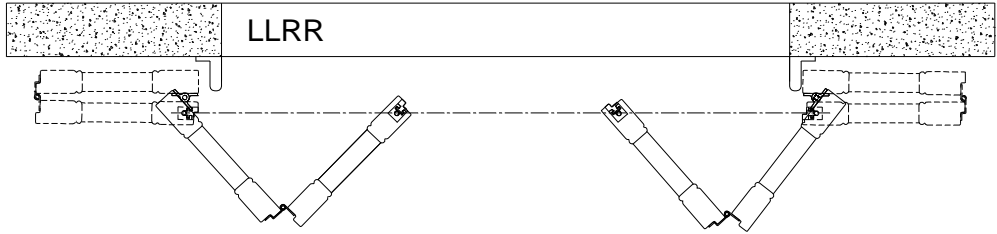
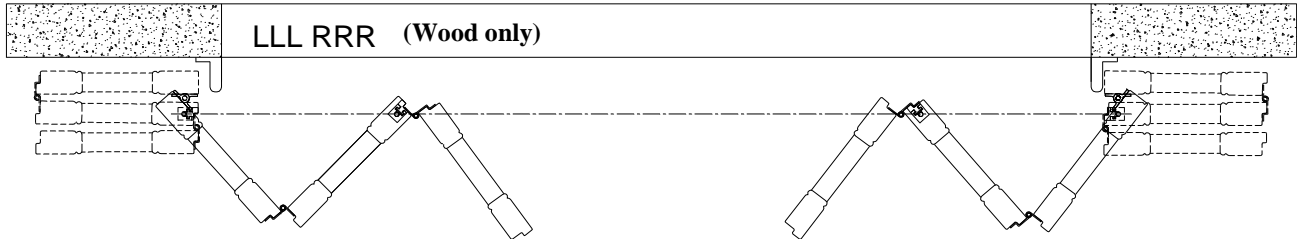


For 180 Bi-fold, if Bottom Pivot L Bracket is required, the extension for the L shape light block will be 45mm in width. Please see picture below:

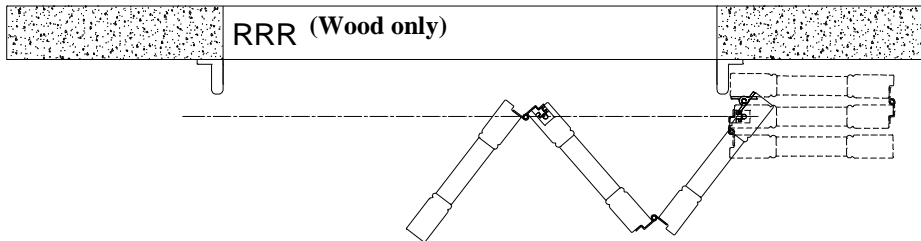


Blindtex Custom Shutter Specification				
Code	ERSH-008	2014 Bi-fold Track	Page	6 / 26
Edition	Q		Compiler	
Effective Date	2017/07/11		Reviewer	

Panel Configuration :



Blindtex Custom Shutter Specification				
Code	ERSH-008	2014 Bi-fold Track	Page	7 / 26
Edition	Q		Compiler	
Effective Date	2017/07/11		Reviewer	



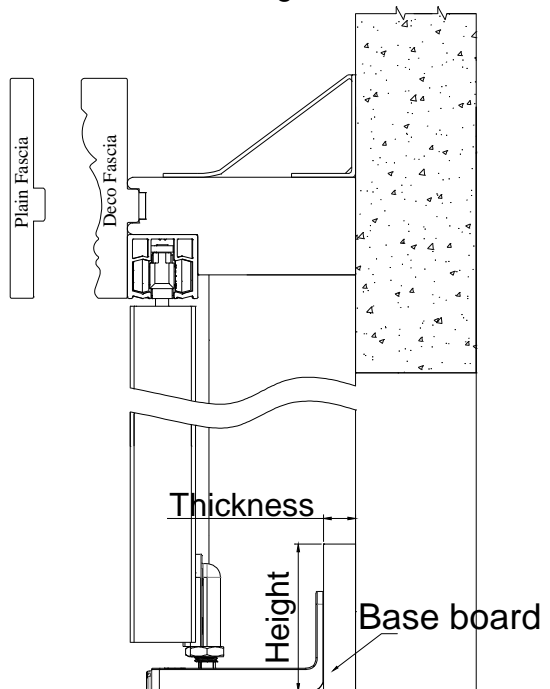
Notes:

If there is no baseboard to the wall, 76mm header can be used.

If there is baseboard to the wall, then it should be as below:

1. If base board thickness is less or equal to 15.9mm, 89mm header can be used.
2. If base board thickness is over 15.9mm, it is suggest using the 76mm header with build out.
And the build out thickness=base board thickness-3.2mm.

Please see the drawing below:



Blindtex Custom Shutter Specification				
Code	ERSH-008	2014 Bi-fold Track	Page	8 / 26
Edition	Q		Compiler	
Effective Date	2017/07/11		Reviewer	

180° Bi-fold Track Shutters Framing Materials (For waterproof ABS, only plain fascia is available)

Type	Header/ Bottom board Dimension	Top Fascia Dimension	L Shape Light Block Strip Dimension
Header & Top Fascia & Light Block Strip & Bottom board	76mm	85.7mm	39mm
	89mm		52mm

Note: For U shape bottom track with bottom board, the bottom board depth is 19mm and width will match with the header.

180° Bi-fold Track Shutters Hardware Box

Parts
Wrench
Hinge Pin
Support L Bracket (based on the length of header)
63.5mm screws for support L bracket
18.5mm screws for support L bracket
Bottom Pivot Bracket
38.1mm screws for bottom pivot bracket
63.5mm screws for Frame

Blindtex Custom Shutter Specification				
Code	ERSH-008	2014 Bi-fold Track	Page	9 / 26
Edition	Q		Compiler	
Effective Date	2017/07/11		Reviewer	

Track Shutters—90⁰ Bi-fold

Guidelines and Specs:

Material: available for all shutter materials.

Stile: 41.3mm, 50.8mm, 57.1mm rabbet and butt stiles are available,
Center stile is not available.

Panel size limitation: same as the normal shutter spec.

Size Definition:

Outside Mount

Max frame-to-frame width: window width + 89mm

Max frame-to-frame height: window height + 114.3mm

Semi-Inside Mount

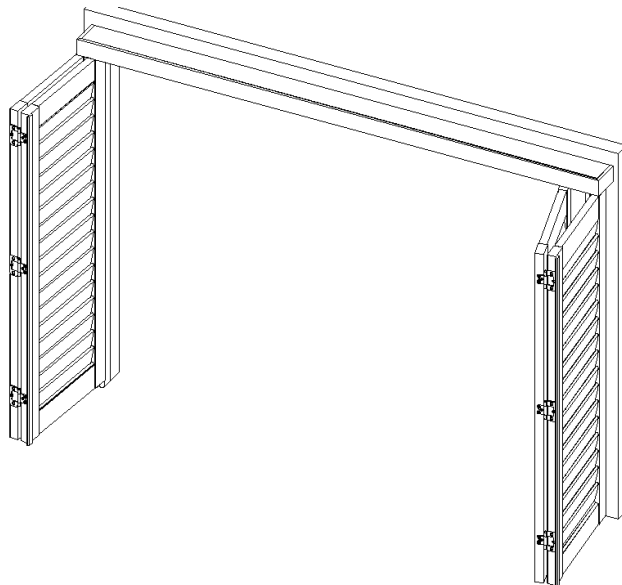
Max frame-to-frame width: window width – 3.2mm

Max frame-to-frame height: window height + 34.9mm

Inside Mount

Max frame-to-frame width: window width – 3.2mm

Max frame-to-frame height: window height – 3.2mm

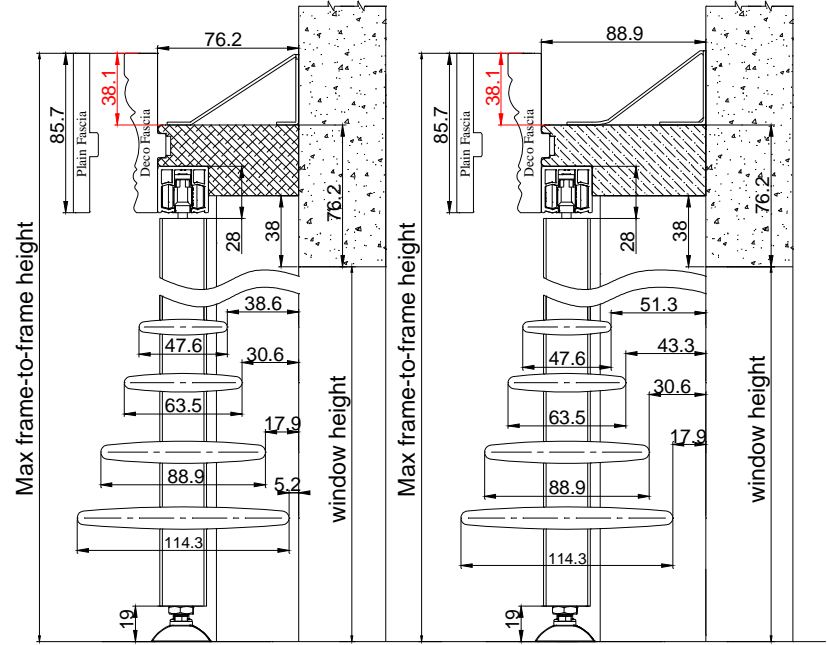


Track is pre-installed on the header; standard 1 track only.

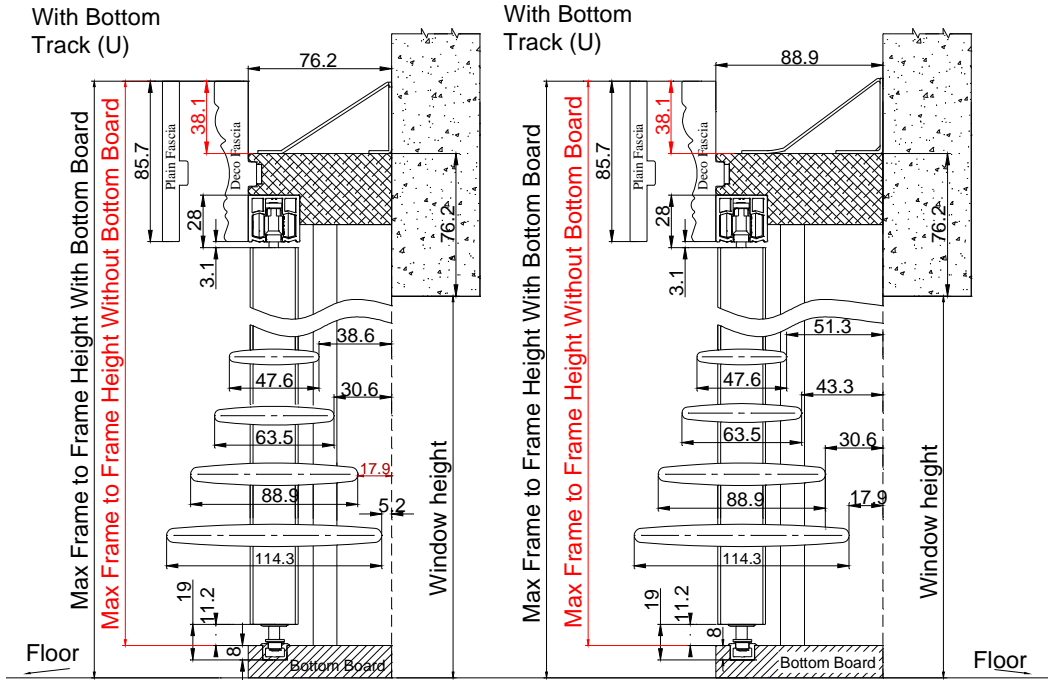
Blindtex Custom Shutter Specification				
Code	ERSH-008	2014 Bi-fold Track	Page	10 / 26
Edition	Q		Compiler	
Effective Date	2017/07/11		Reviewer	

Mounting Options: Outside Mount

Side View



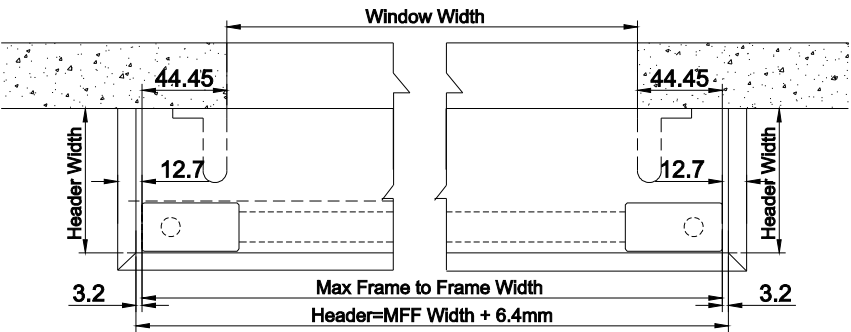
Side View (U Track w/Bottom Board)



Blindtex Custom Shutter Specification				
Code	ERSH-008	2014 Bi-fold Track	Page	11 / 26
Edition	Q		Compiler	
Effective Date	2017/07/11		Reviewer	

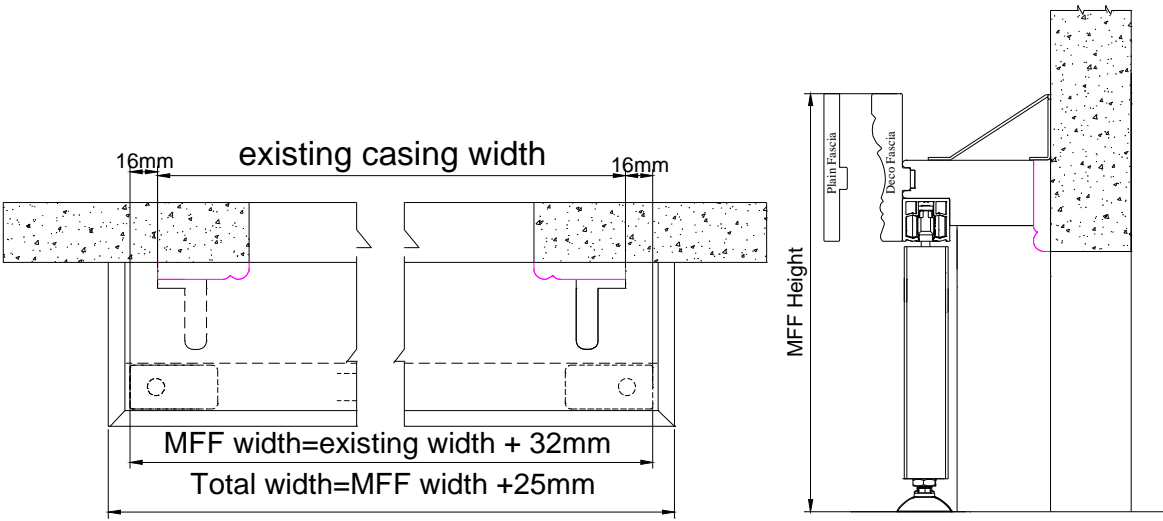
Without Casing

Top View



Fascia return will protrude the panel about 12.7mm for each side.

With Existing Casing



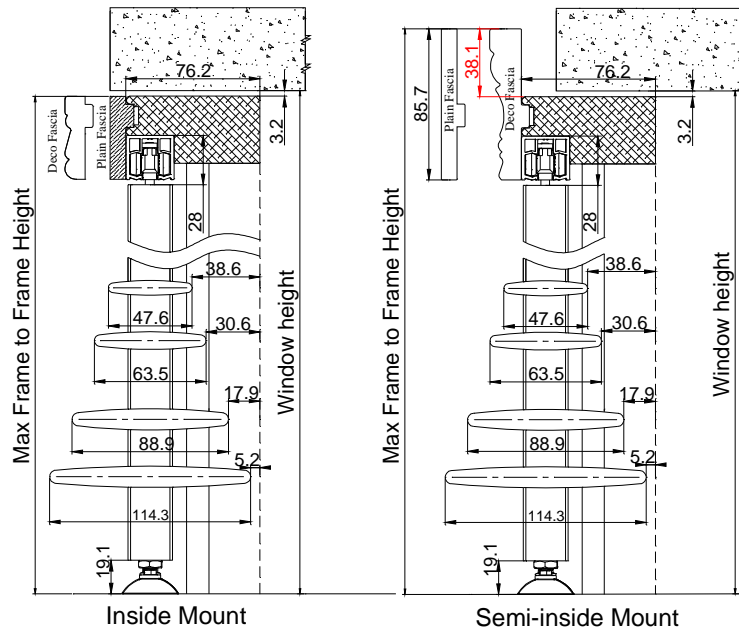
Blindtex Custom Shutter Specification				
Code	ERSH-008	2014 Bi-fold Track	Page	12 / 26
Edition	Q		Compiler	
Effective Date	2017/07/11		Reviewer	

12 / 26

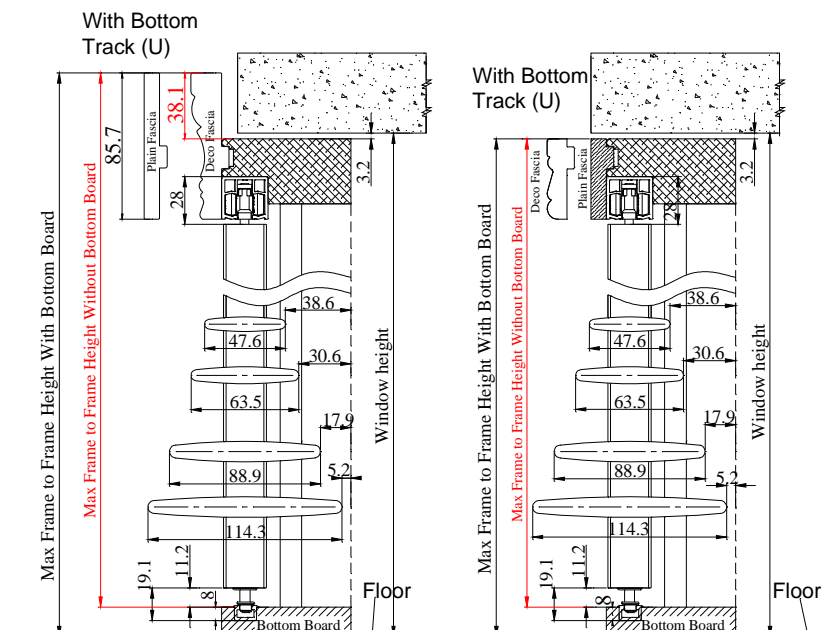
Reviewer

2017/07/11

Side View

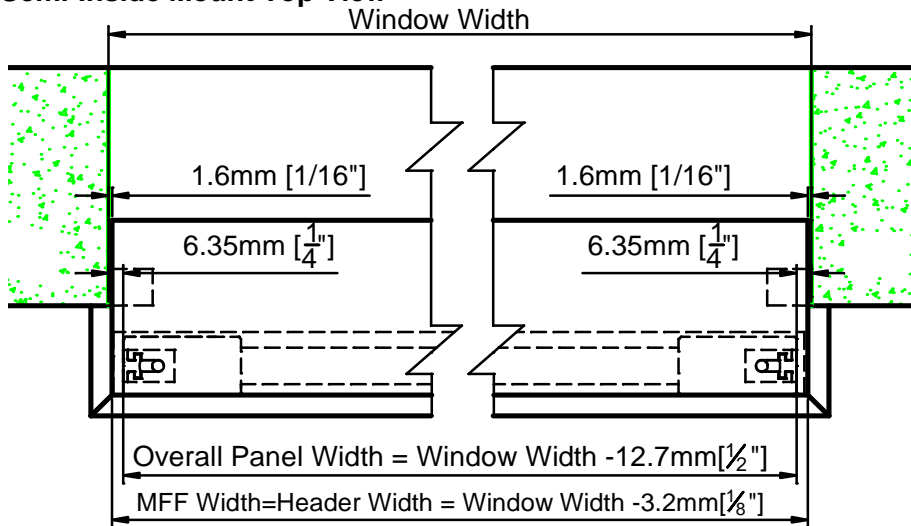


Inside Mount

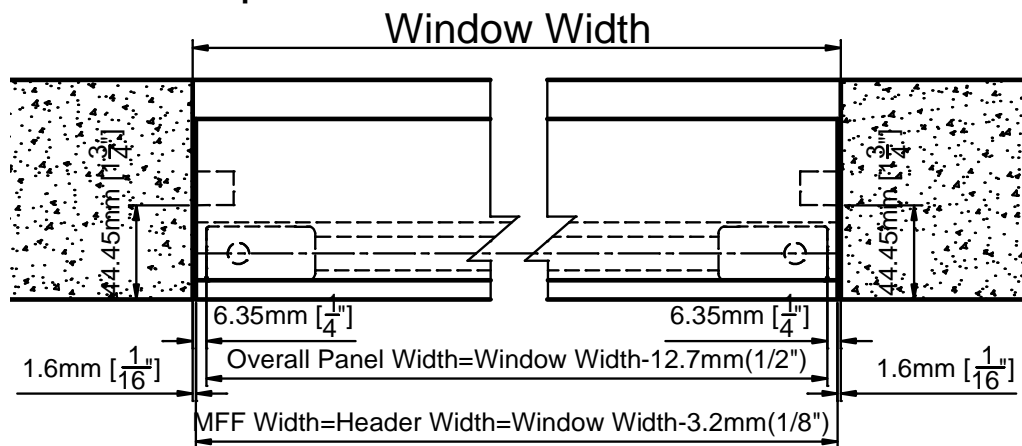


Blindtex Custom Shutter Specification				
Code	ERSH-008	2014 Bi-fold Track	Page	13 / 26
Edition	Q		Compiler	
Effective Date	2017/07/11		Reviewer	

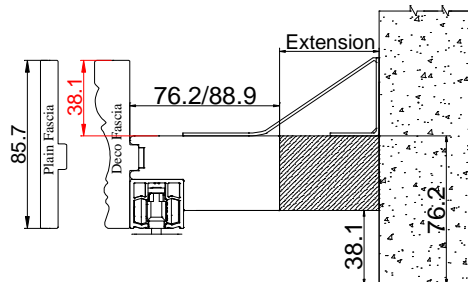
Semi-Inside Mount Top View



Inside Mount Top View

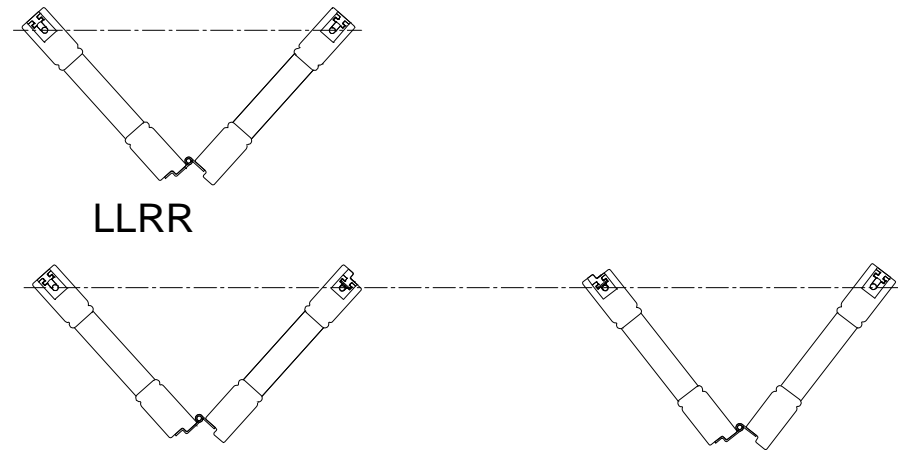


- ✧ Header Extension: Optional
- ✧ Custom extension up to 50.8mm for Header
- ✧ The extension will be pre-attached.

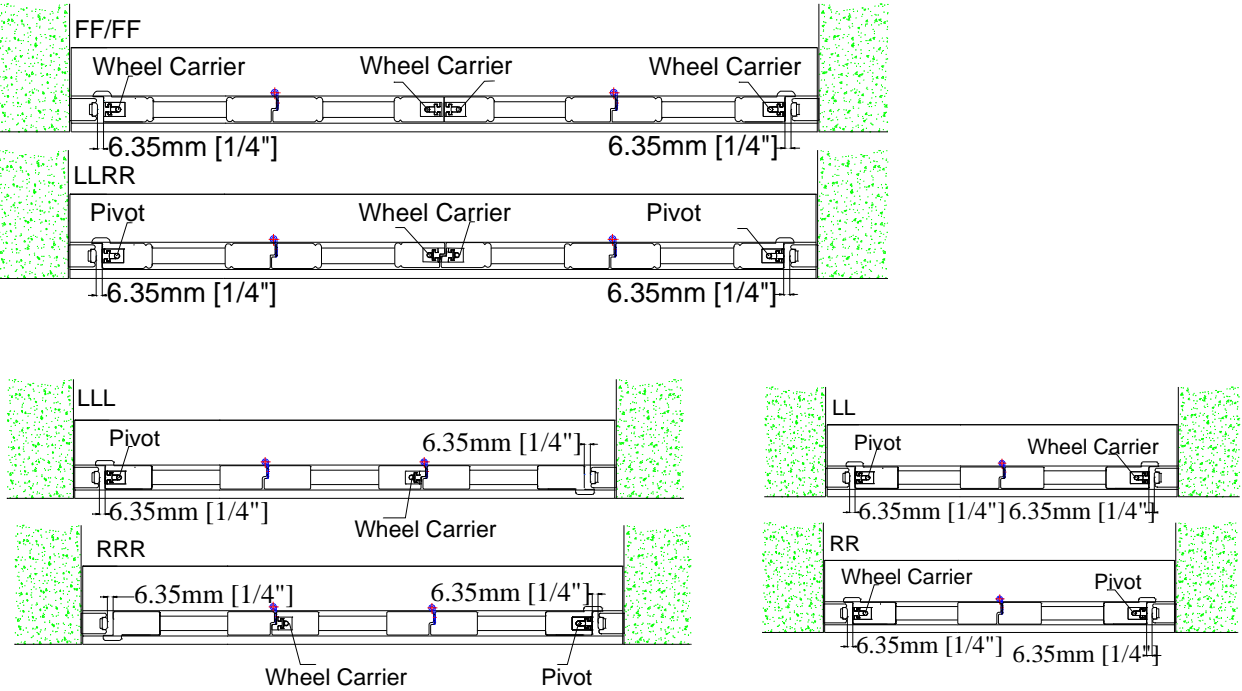


Blindtex Custom Shutter Specification				
Code	ERSH-008	2014 Bi-fold Track	Page	14 / 26
Edition	Q		Compiler	
Effective Date	2017/07/11		Reviewer	

Panel Configuration :
LL or RR

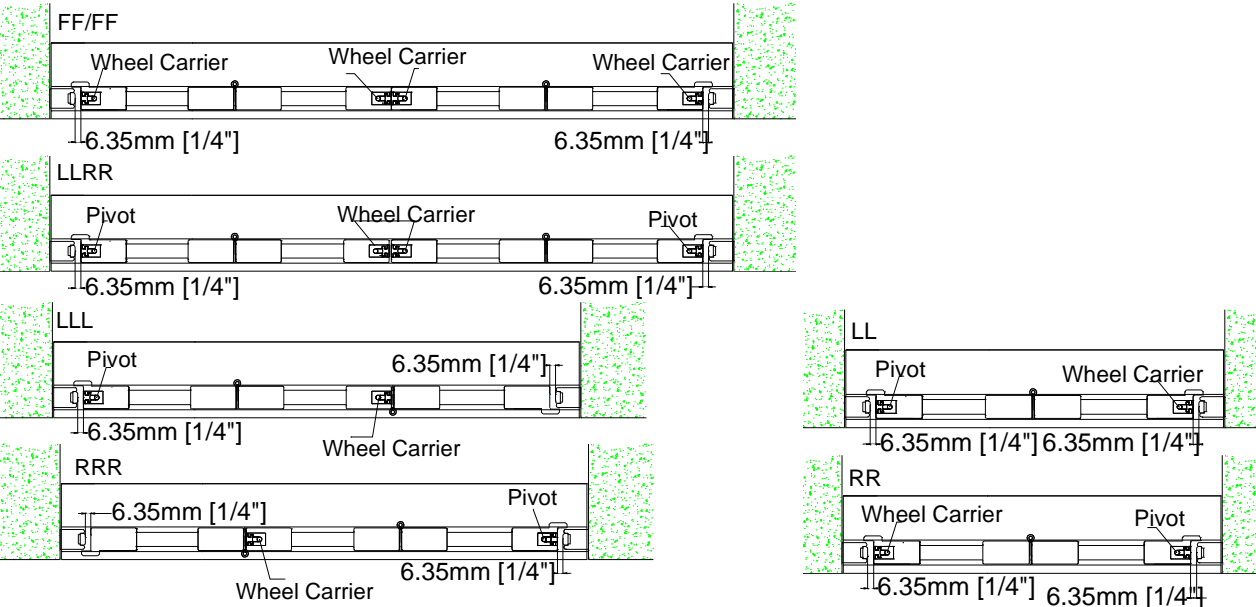


Optional (Hang Strip for Inside Mount for Wood Only)



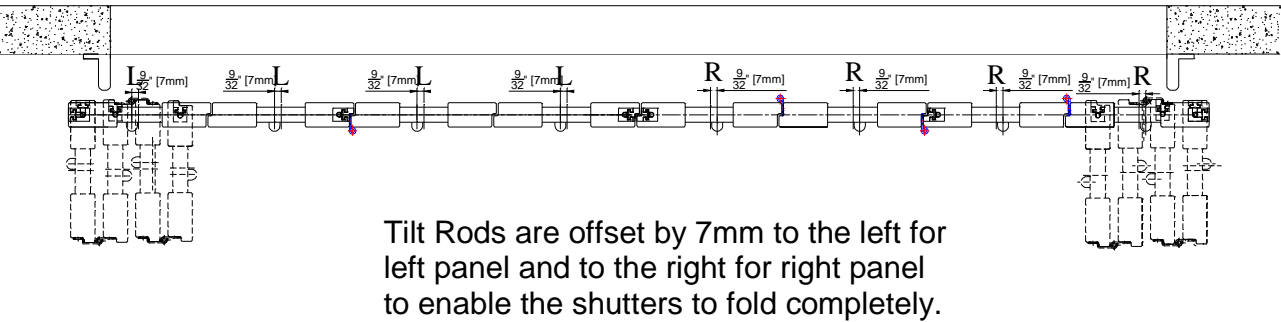
Note: When Butt/Rabbit Stile is required, the stile next to the hang strip will be astragal stile.

Blindtex Custom Shutter Specification				
Code	ERSH-008	2014 Bi-fold Track	Page	15 / 26
Edition	Q		Compiler	
Effective Date	2017/07/11		Reviewer	

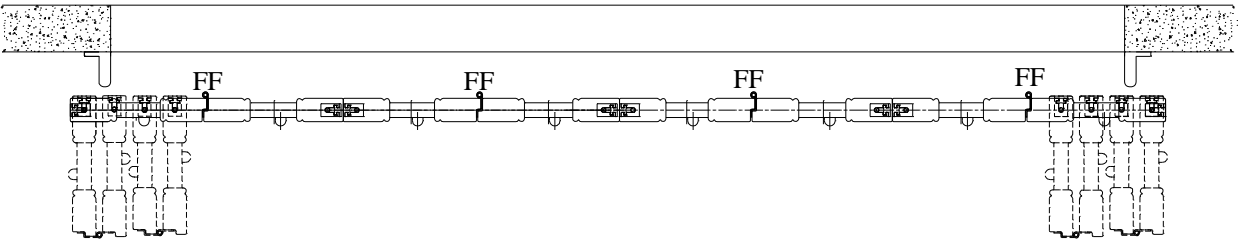


90° Multi-Fold Track Shutters

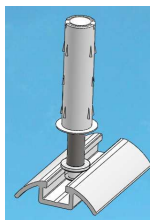
Panel Configuration: LLLL, RRRR, or LLLLRRRR



90° Floating Panels



Blindtex Custom Shutter Specification				
Code	ERSH-008	2014 Bi-fold Track	Page	16 / 26
Edition	Q		Compiler	
Effective Date	2017/07/11		Reviewer	



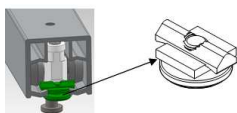
- Two or four panels can be hinged together, fold and slide to either direction
- Application comes with wheel carrier, spring loaded guide and floor track
- Can be used on large window

Note:

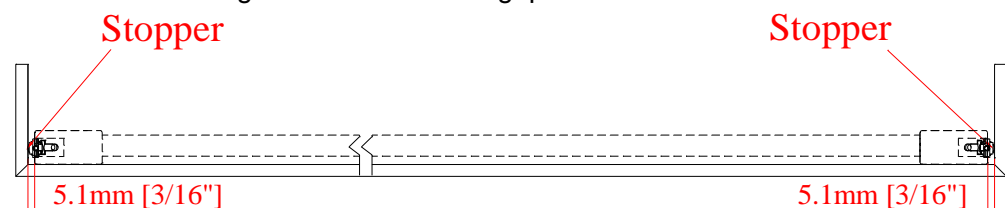
1. For 90° Floating Panels outside mount/semi-inside mount without side boards but with fascia returns, the 2016 Stopper will be supplied by default. The gap between the fascia return and the panel is 5mm each side.

The 2016 stopper can also be used in the center or any position of the top track as an option.

2016 Stopper



Please see drawing below to show the gap.



2. When rabbet stile required, the meeting stile of unhinged stiles will be butt stile by default. E.g.: Butt stile is default supplied between L/F, F/F, F/R panels.

90° Bi Fold Track Shutters Framing Materials (For waterproof ABS, only plain fascia is available)

Type		Header/ Bottom Board Dimension	Top Fascia Dimension	Light Block Strip Dimension	Hang Strip Dimension
Header & Top Fascia & Light Block Strip Bottom Board	Outside Mount	76mm	85.7mm	39mm	
		89mm		52mm	
	Inside Mount	76mm	47mm	15.9mmx19mm	27.4mmx22.2mm
	Semi-Inside Mount	76mm	85.7mm	15.9mmx19mm	

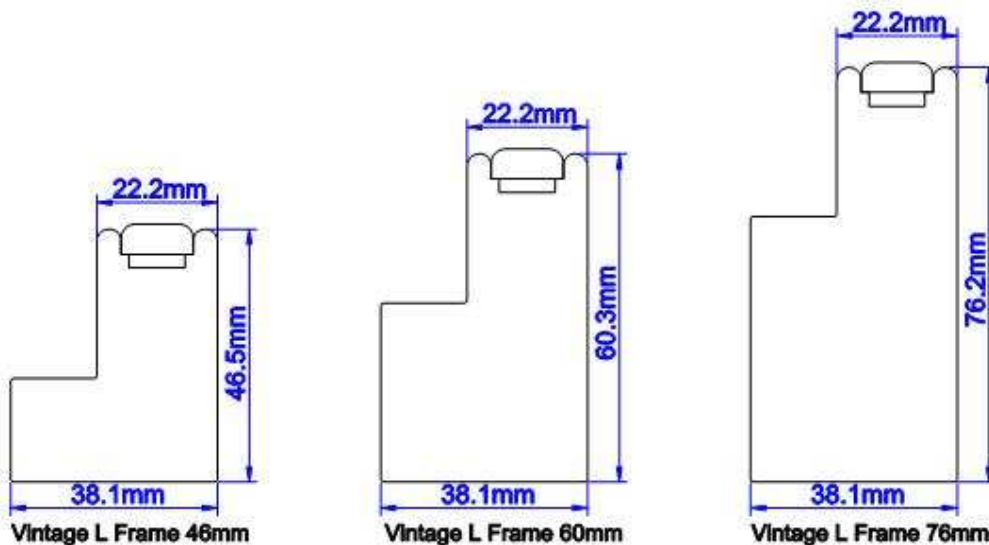
Note: It will be L shape light block strip for outside mount.

For U shape bottom track with bottom board, the bottom board depth is 19mm and width will match with the header.

Blindtex Custom Shutter Specification				
Code	ERSH-008	2014 Bi-fold Track	Page	17 / 26
Edition	Q		Compiler	
Effective Date	2017/07/11		Reviewer	

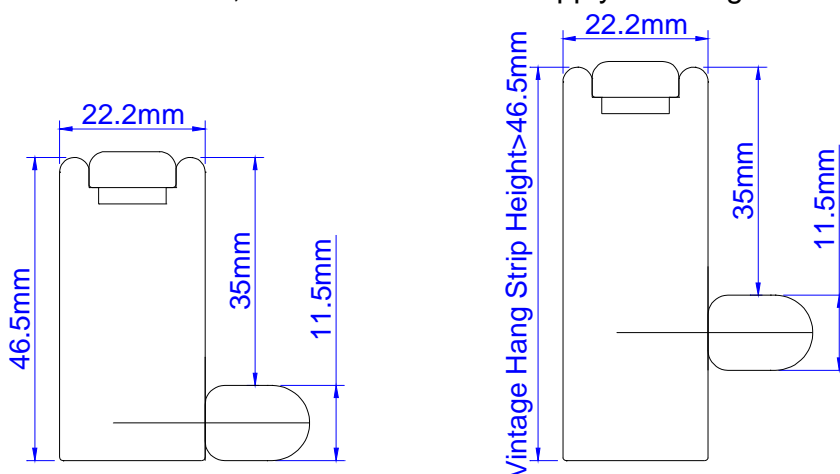
Frame Hinged Bi-fold

Available Stile: Rabbet Stile Only
Available Frame type



Vintage Hang Strip with 11.5mm light block: For single direction bi-fold or multi-fold shutter with even panel qty, the frame on the unhinged side will be Vintage Hang Strip with 11.5mm light block, the height of the Vintage Hang Strip will match with that of the hinged side frame. For non-wood shutters like MDF/MDF+ etc., the Vintage Hang Strip will be made in wood with surcharge.

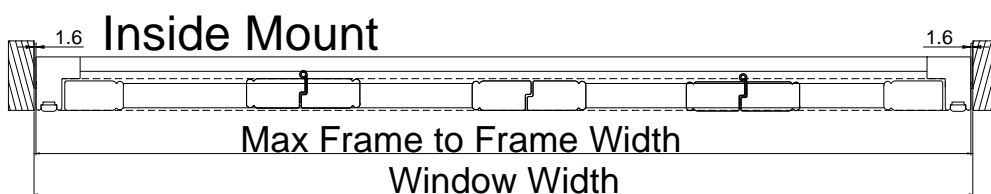
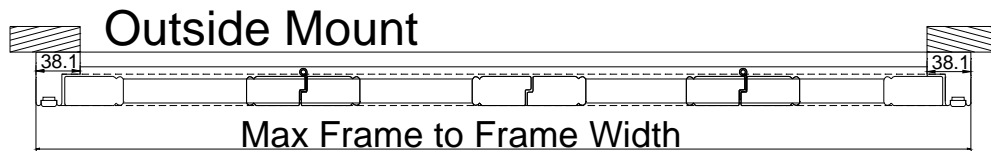
For ABS shutters, it is not available to supply with single direction bi-fold panels.



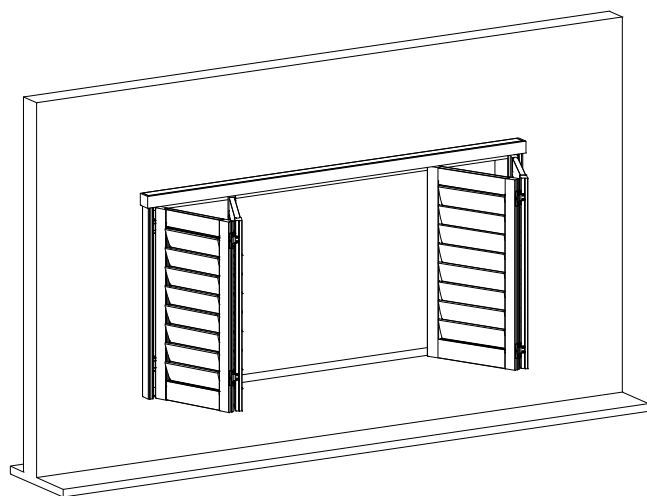
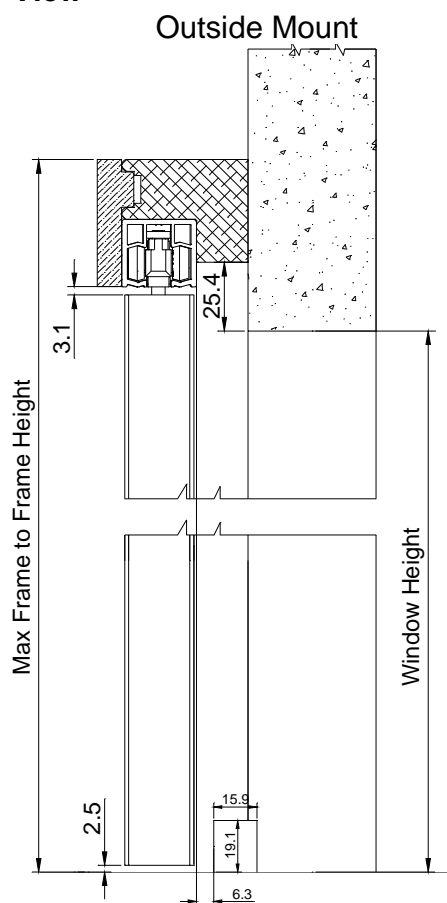
Blindtex Custom Shutter Specification				
Code	ERSH-008	2014 Bi-fold Track	Page	18 / 26
Edition	Q		Compiler	
Effective Date	2017/07/11		Reviewer	

Top View

Hinged at Left or Right with wheel assembly at top;

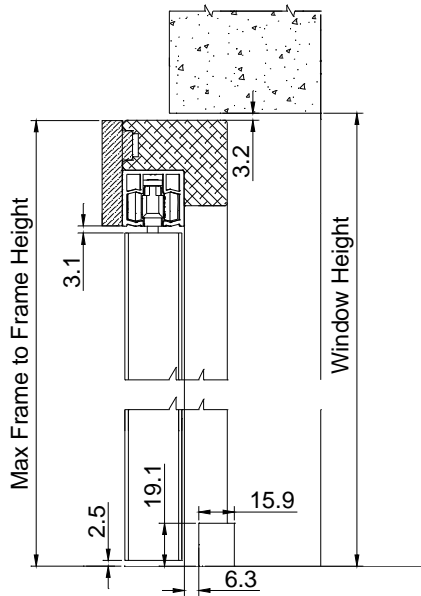


Side View

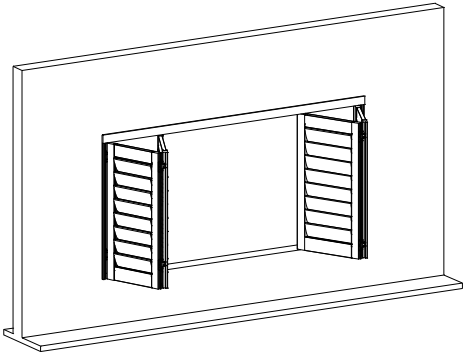
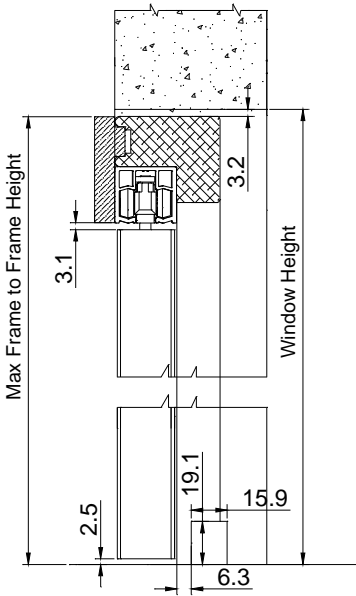


Blindtex Custom Shutter Specification				
Code	ERSH-008	2014 Bi-fold Track	Page	19 / 26
Edition	Q		Compiler	
Effective Date	2017/07/11		Reviewer	

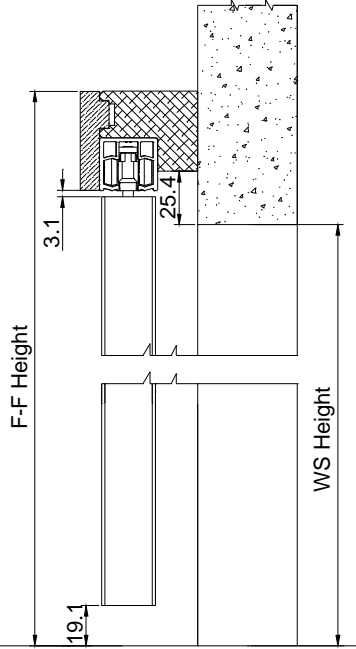
Semi-Inside



Inside Mount

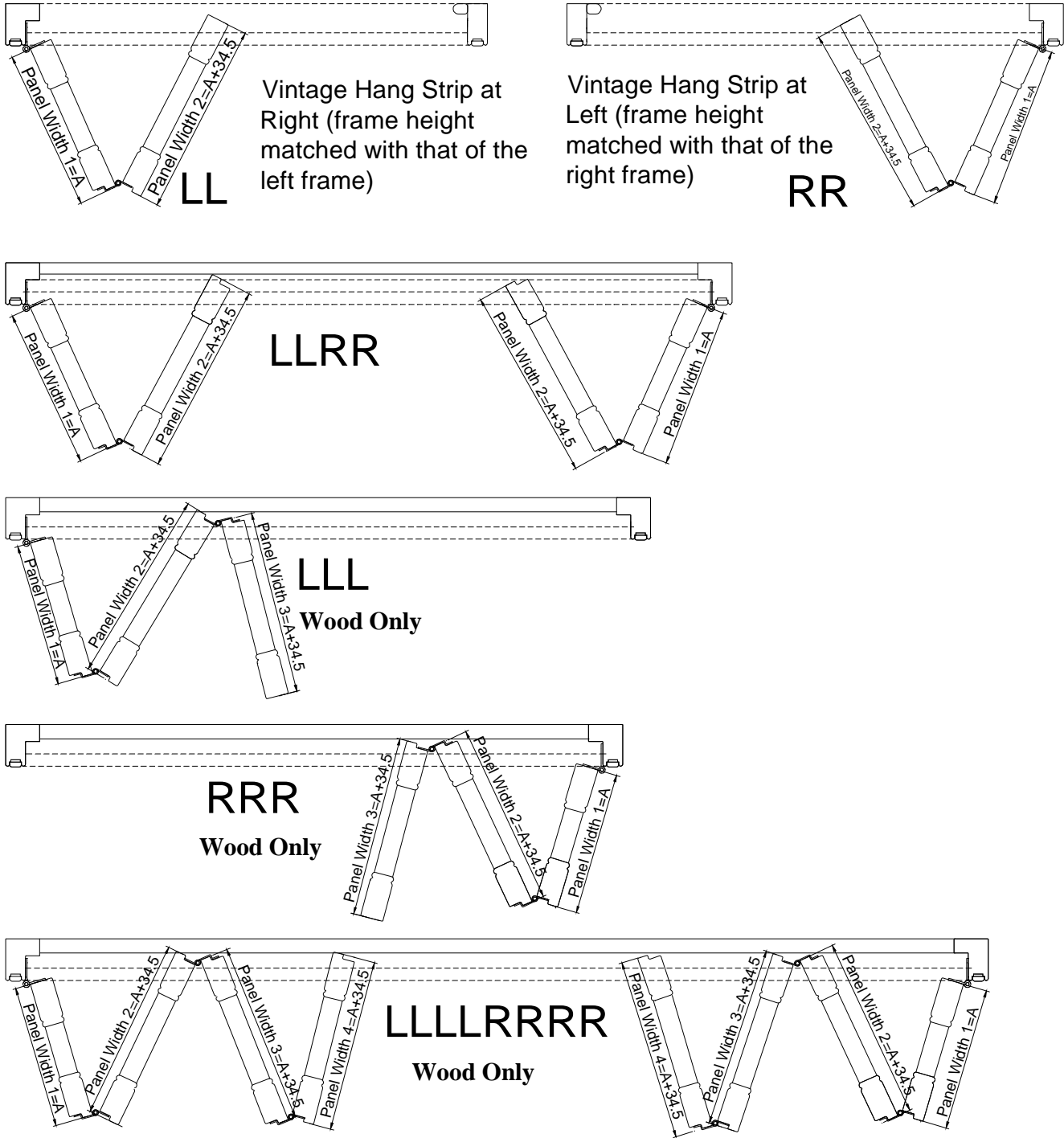


For frame hinged bi-fold track shutter used as door, the bottom gap will be 19mm by default. Please specify “Used As Door” on the order form.

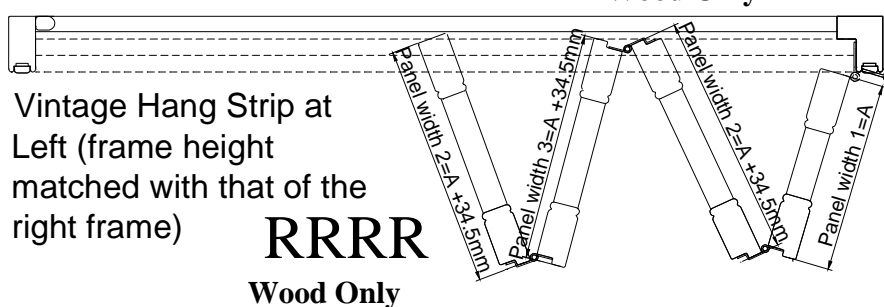
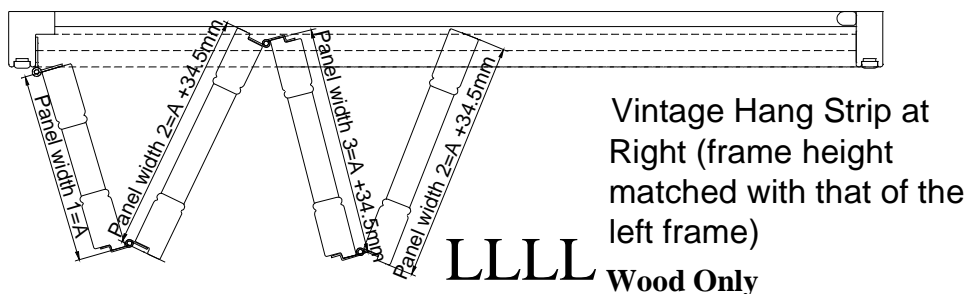


Blindtex Custom Shutter Specification				
Code	ERSH-008	2014 Bi-fold Track	Page	20 / 26
Edition	Q		Compiler	
Effective Date	2017/07/11		Reviewer	

Panel Configuration (uneven panel width)

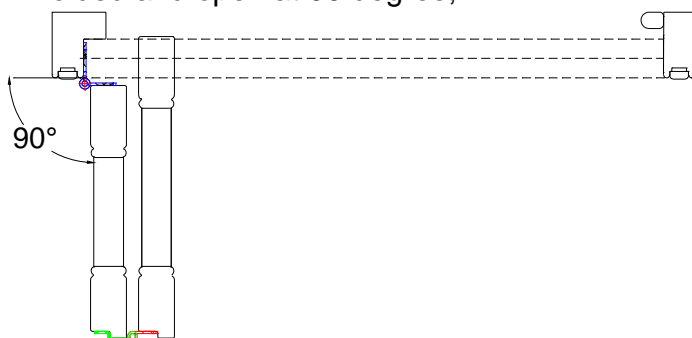


Blindtex Custom Shutter Specification				
Code	ERSH-008	2014 Bi-fold Track	Page	21 / 26
Edition	Q		Compiler	
Effective Date	2017/07/11		Reviewer	



Notes:

1. Only available for 3-Sides + bottom light block (4-sides is not available); Panels can be folded and open at 90 degree;



2. Frames available: Only Vintage L Frame

- 1) For top frame, the insert will be replaced by top fascia;
- 2) Top track will be pre-attached to the top frame;
- 3) Frame will be pre-drilled with screw holes same as regular shutters.

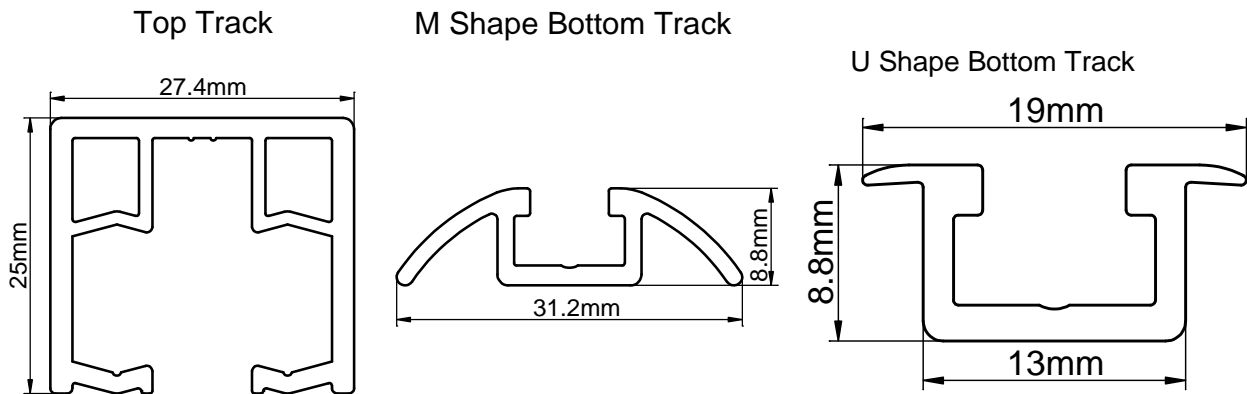
Ring Pull and Bolt:

The ring pull will be provided as an option for both 90 & 180 degree bi-fold Track Shutters; and for frame hinged bi-fold, the ring pull will be supplied as default. Please refer to the specification of Bolt and Ring Pull for the location. Customer needs specify bolt and ring pull location on the order form.

Ring pull color will match the hinge color.

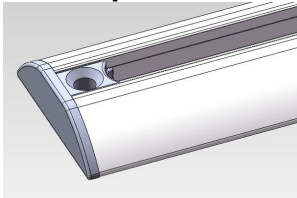
Blindtex Custom Shutter Specification				
Code	ERSH-008	2014 Bi-fold Track	Page	22 / 26
Edition	Q		Compiler	
Effective Date	2017/07/11		Reviewer	

Track Dimension:

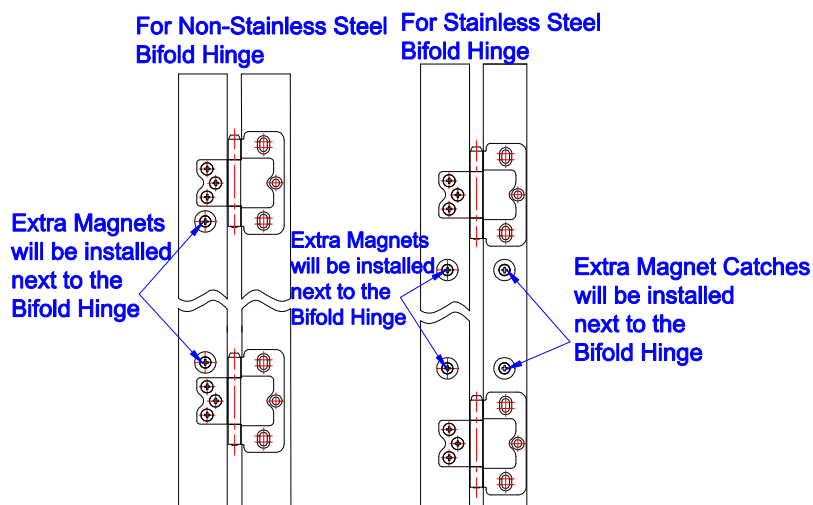


Note: If apply to U shape bottom track, the bottom board should be needed otherwise the customer need slot the floor to install the bottom track. Bottom Board size will match with the header.

End Caps will be supplied for M shape bottom track for outside / semi-inside mount:

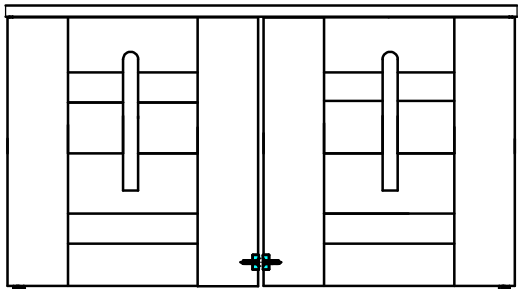


Extra Magnets will be supplied for Bifold hinges: (only for the most top and bottom hinges)



Blindtex Custom Shutter Specification				
Code	ERSH-008	2014 Bi-fold Track	Page	23 / 26
Edition	Q		Compiler	
Effective Date	2017/07/11		Reviewer	

Side Magnets: applied to the meeting stiles of LR panels



Extra magnet and Side Magnet: will be supplied for all materials except waterproof ABS shutters.



90° Bi Fold Track Shutters Hardware Box

Parts
Wrench
Hinge Pin
Support L Bracket (based on the length of header)
63.5mm screws for support L bracket
18.5mm screws for support L bracket
Bottom Pivot Bracket
38.1mm screws for bottom pivot bracket
63.5mm screws for Frame

Notes:

For waterproof ABS, when 76mm header is selected, the header will make as 60.3mm (Vintage L frame for ABS) + 15.9mm extension.

When 89mm header is selected, the header will make as 60.3mm (Vintage L frame for ABS) + 28.6mm extension.

The extension for both header sizes will be pre-attached.

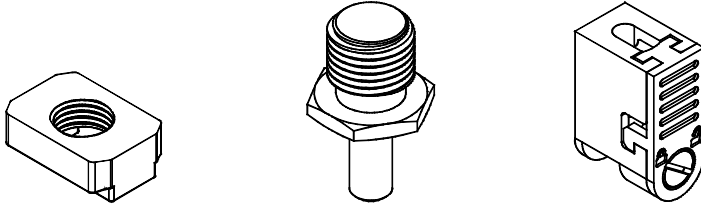
For waterproof ABS, only plain fascia is available.

Blindtex Custom Shutter Specification				
Code	ERSH-008	2014 Bi-fold Track	Page	24 / 26
Edition	Q		Compiler	
Effective Date	2017/07/11		Reviewer	

Hardware:

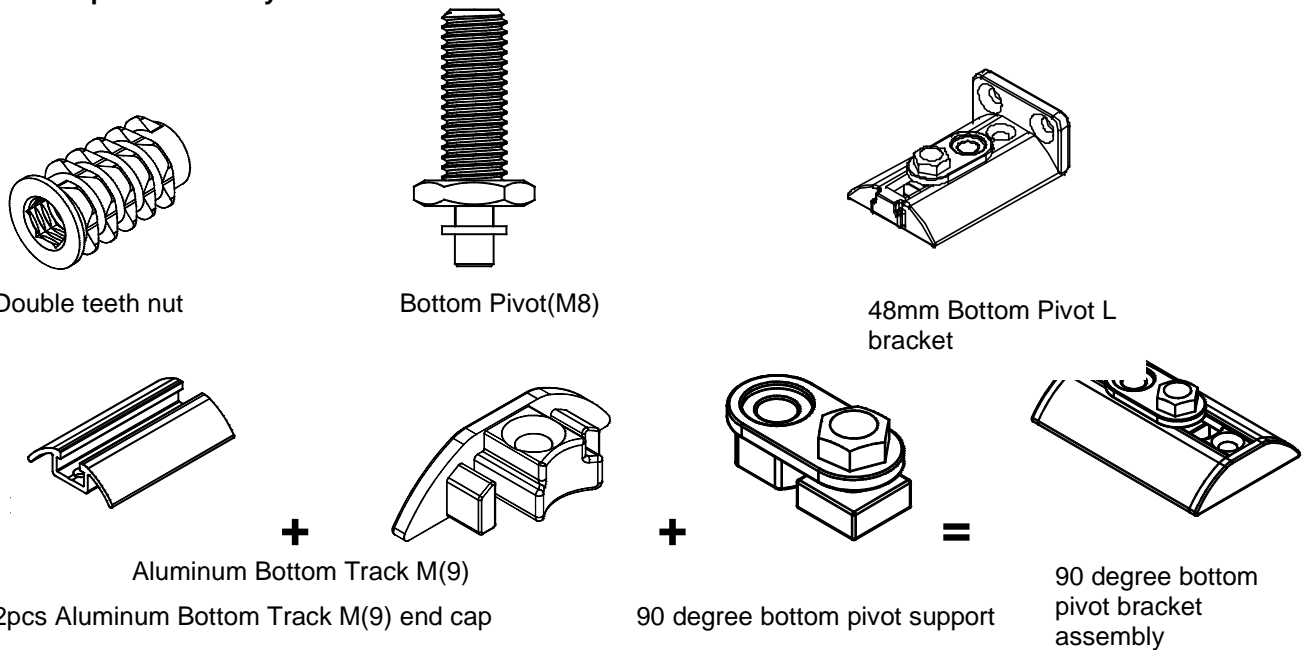
Hardware for 90 degree Bi-fold Tracking system:

Top pivot assembly:



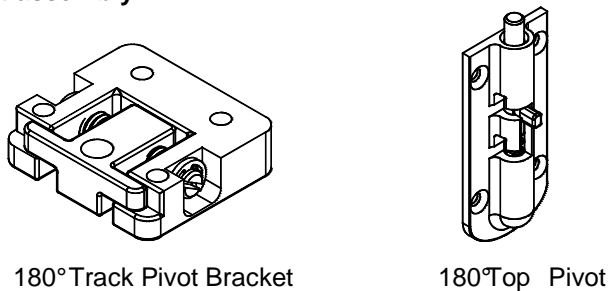
Top Pivot Locking nut Top Pivot (M10) Panel hanger(for Butt Stile)

Bottom pivot assembly:



180 degree Bi-fold Tracking system with hardware:

Top pivot assembly:

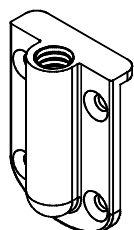


180°Track Pivot Bracket

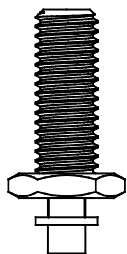
180°Top Pivot

Blindtex Custom Shutter Specification				
Code	ERSH-008	2014 Bi-fold Track	Page	25 / 26
Edition	Q		Compiler	
Effective Date	2017/07/11		Reviewer	

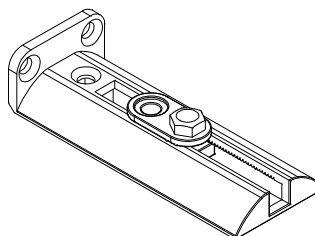
Bottom pivot assembly (with L shape bottom pivot):



180° Bottom Pivot Support

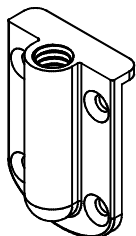


Bottom Pivot (M8)

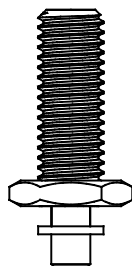


81mm Bottom Pivot L Bracket

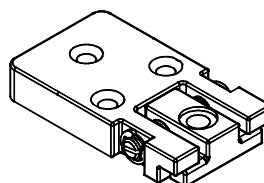
Bottom pivot assembly (with plain bottom pivot):



180° Bottom Pivot Support

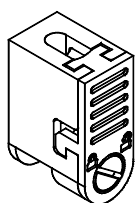


Bottom Pivot (M8)



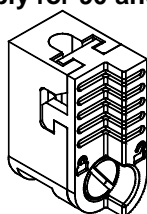
180° Bottom Pivot Plain Base

Wheel carrier assembly for 90 and 180 degree Bi-fold Tracking system:



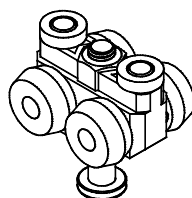
Panel hanger
(for Butt Stile)

or



Panel Hanger
(for Rabbet Stile)

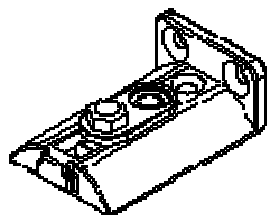
+



Wheel Carrier

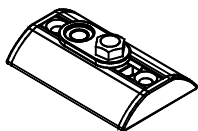
Bottom Pivot Bracket for 90° Bifold:

For 90° Bifold Track Shutter, there will be 2 types of Bottom Pivot Brackets available.



For Inside Mount, 48mm Bottom Pivot L Bracket will be supplied as default;

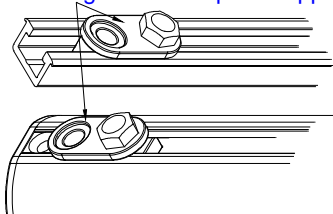
Blindtex Custom Shutter Specification				
Code	ERSH-008	2014 Bi-fold Track	Page	26 / 26
Edition	Q		Compiler	
Effective Date	2017/07/11		Reviewer	



For Semi-Inside or Outside Mount, 90 degree bottom pivot bracket assembly will be supplied as default.

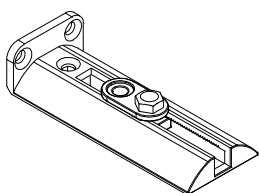
For 90° Bifold Track Shutter with bottom track, only the 90 degree bottom pivot support will be pre-installed in the bottom track, no bottom pivot bracket will be supplied by default.

90 degree bottom pivot support

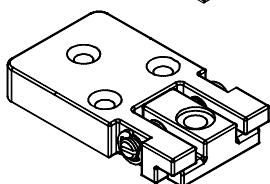


Bottom Pivot Bracket for 180° Bifold:

For 180° Bifold Track Shutter, there will be 2 types of Bottom Pivot Brackets available.



For 180° Bifold Track Shutter without bottom track, 81mm Bottom Pivot L Bracket will be supplied as default.



For 180° Bifold Track Shutter with bottom track, 180° Bottom Pivot Plain Base will be supplied as default.

The Claim Limitation Date for Shipping Damage for Airfreight Orders:

Due to the requirement of the airfreight company, for all airfreight orders with shipping damages, claims must be submitted within 1 week after the date of receipt.