

Blindtex Custom Shutter Specification				
Code	ERSH-013	Special Options	Page	1 / 7
Edition	B		Effective Date	2017/07/11

### Specialty Shutter Option

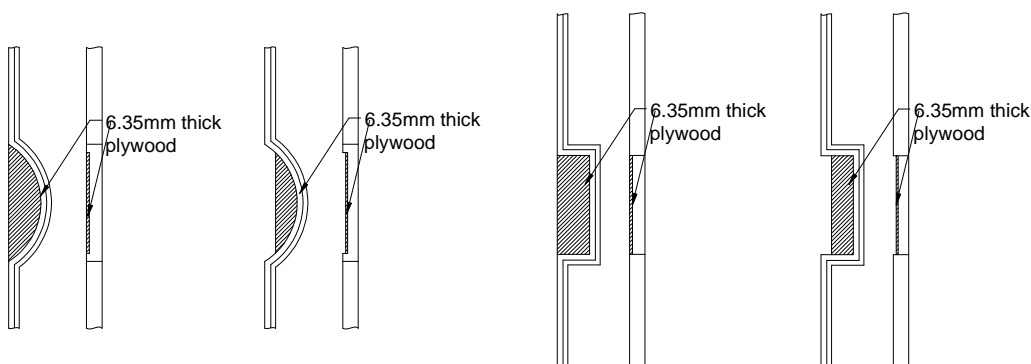
#### **French Door Cutout**

**Available: White Teak, Waterproof Woodbury (made In ABS), Phoenixwood, MDF+ (made of hardwood)**

### **French Door Cutout Order Form Package**

#### **French Door Cutout Available:**

Currently has 2 types of cutout available (Curved Cutout and Square Cutout) and each type has 2 cutout options.



**Type A**

**Type B**

**Type C**

**Type D**

- Type A: Curved Flush Cutout
- Type B: Curved Offset Cutout
- Type C: Rectangular Flush Cutout
- Type D: Rectangular Offset Cutout

**Note:**

- \* Type A and C cutout are flush with frame
- \* Type B and D cutout are offset and go over trim around glass

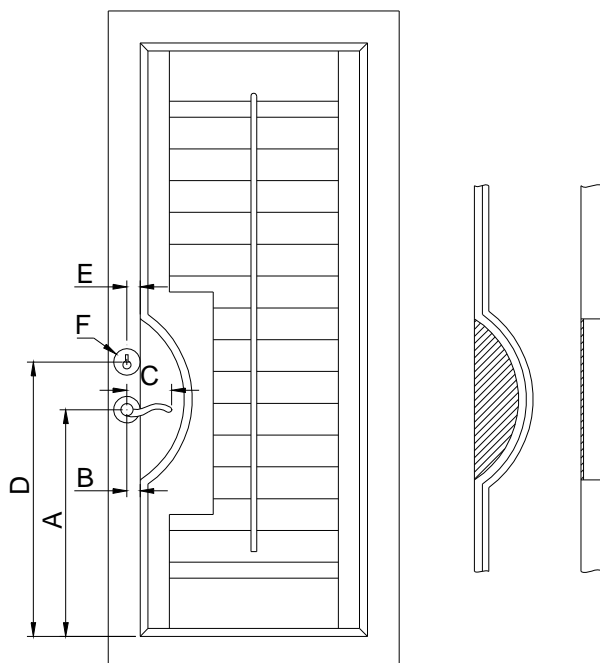
#### **Helpful Tips:**

L frame works better for French Door Installation. There will be approximately 12mm gap between edge of handle and cutout for handle or 50mm gap between edge of handle and cutout for round knob. If cutout will be over glass area then light can come through cutout area. In this case back of frame will be routed out and 6mm thick plywood will be placed on back of frame in cutout area.

Please provide max frame to frame measurement for shutter size.

Date: \_\_\_\_\_ Sidemark: \_\_\_\_\_ Contact Person: \_\_\_\_\_  
 Phone #: \_\_\_\_\_  
 Office: \_\_\_\_\_ Job #: \_\_\_\_\_ Fax #: \_\_\_\_\_

## French Door Cutout Order Form Type A



A) Bottom of frame to centre of handle pivot. \_\_\_\_\_

B) Edge of frame to centre of handle pivot. \_\_\_\_\_

C) End of handle to centre of handle pivot. \_\_\_\_\_

D) Bottom of frame to centre of lock. \_\_\_\_\_

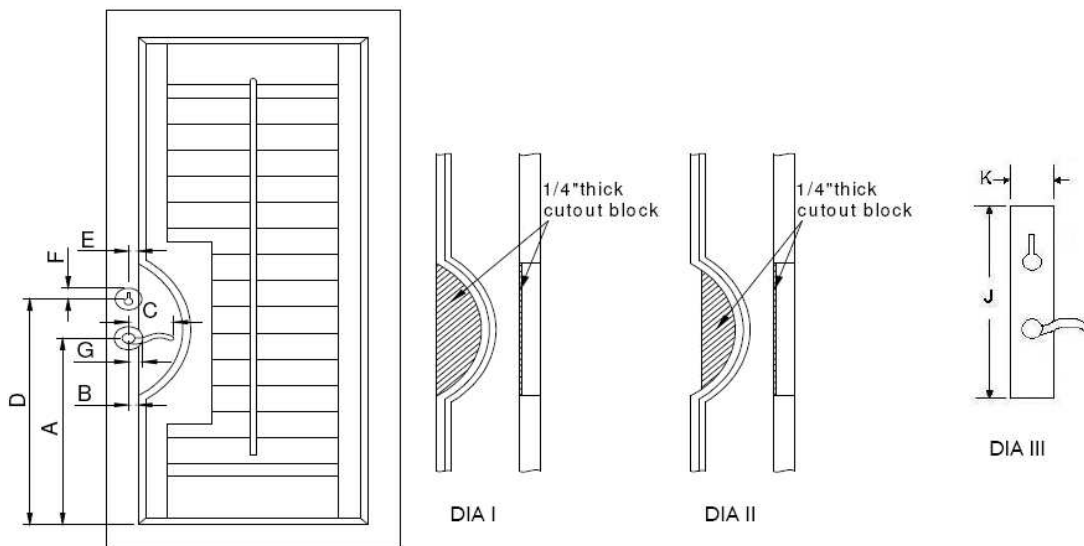
E) Edge of frame to centre of lock. \_\_\_\_\_

F) Radius of the lock. \_\_\_\_\_

G) Whether handle is on left or right side of the door \_\_\_\_\_

H) Whether frame with cutout-blocked required? \_\_\_\_\_

\* If your French door does not have a lock, please write " N/A " on D, E, and F.



A. Bottom of L frame to center of handle pivot. \_\_\_\_\_

B. Edge of L frame to center of handle pivot. \_\_\_\_\_

C. End of handle to center of handle pivot. \_\_\_\_\_

D. Bottom of L frame to center of lock. \_\_\_\_\_

E. Edge of L frame to center of lock. \_\_\_\_\_

F. Center of Lock to top edge of lock base plate. \_\_\_\_\_

G. Center of handle pivot to edge of handle base plate. \_\_\_\_\_

H. Is the handle on left or right side of the door? \_\_\_\_\_

I. Is frame with cutout-block required? \_\_\_\_\_

If the base plate is square (see DIA III), then please provide following information:

J. Square base plate height. \_\_\_\_\_

K. Square base plate width. \_\_\_\_\_

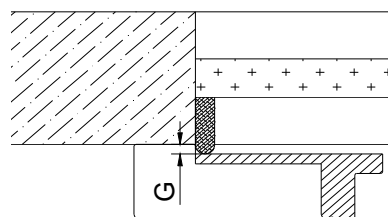
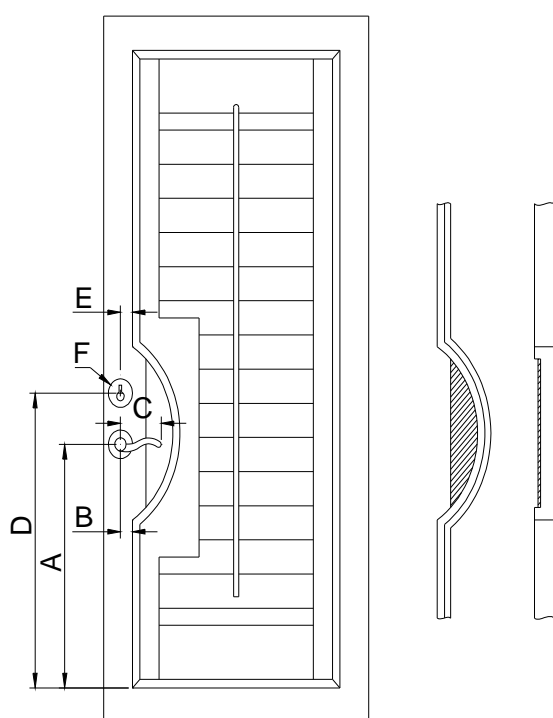
\* If your French door does not have a lock, please write " N/A" on D, E, and F.

\* Cutout block piece will be made according to DIA II if handle or lock base plate can hit cutout block piece, otherwise cutout block piece will be made according to DIA I

Date: \_\_\_\_\_ Sidemark: \_\_\_\_\_ Contact Person: \_\_\_\_\_  
 Office: \_\_\_\_\_ Job #: \_\_\_\_\_ Phone #: \_\_\_\_\_  
 Fax #: \_\_\_\_\_

## French Door Cutout Order Form

### Type B



Top view of the cutout section

A) Bottom of frame to centre of handle pivot. \_\_\_\_\_

B) Edge of frame to centre of handle pivot. \_\_\_\_\_

C) End of handle to centre of handle pivot. \_\_\_\_\_

D) Bottom of frame to centre of lock. \_\_\_\_\_

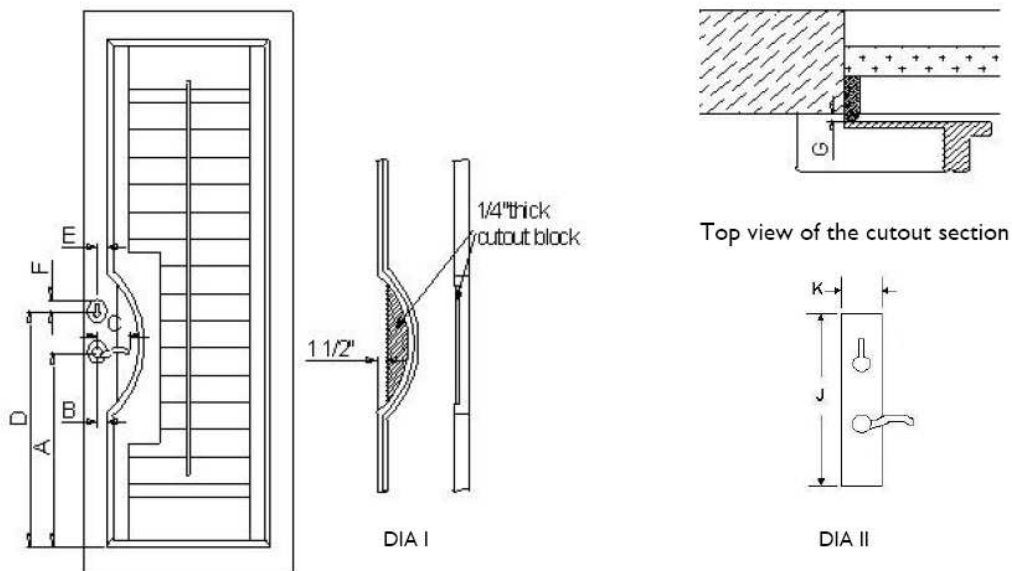
E) Edge of frame to centre of lock. \_\_\_\_\_

F) Radius of the lock. \_\_\_\_\_

G) Projection of the trim. \_\_\_\_\_

H) Whether handle is on left or right side of the door. \_\_\_\_\_

I) Whether frame with cutout-blocked required? \_\_\_\_\_



A. Bottom of L frame to center of handle pivot. \_\_\_\_\_

B. Edge of L frame to center of handle pivot. \_\_\_\_\_

C. End of handle to center of handle pivot. \_\_\_\_\_

D. Bottom of L frame to center of lock. \_\_\_\_\_

E. Edge of L frame to center of lock. \_\_\_\_\_

F. Center of Lock to top edge of lock base plate. \_\_\_\_\_

G. Projection of trim. \_\_\_\_\_

H. Is handle on left or right side of the door? \_\_\_\_\_

I. Is frame with cutout-blocked required? \_\_\_\_\_

If the base plate is square (see DIA II), then please provide following information:

J. Square base plate height. \_\_\_\_\_

K. Square base plate width. \_\_\_\_\_

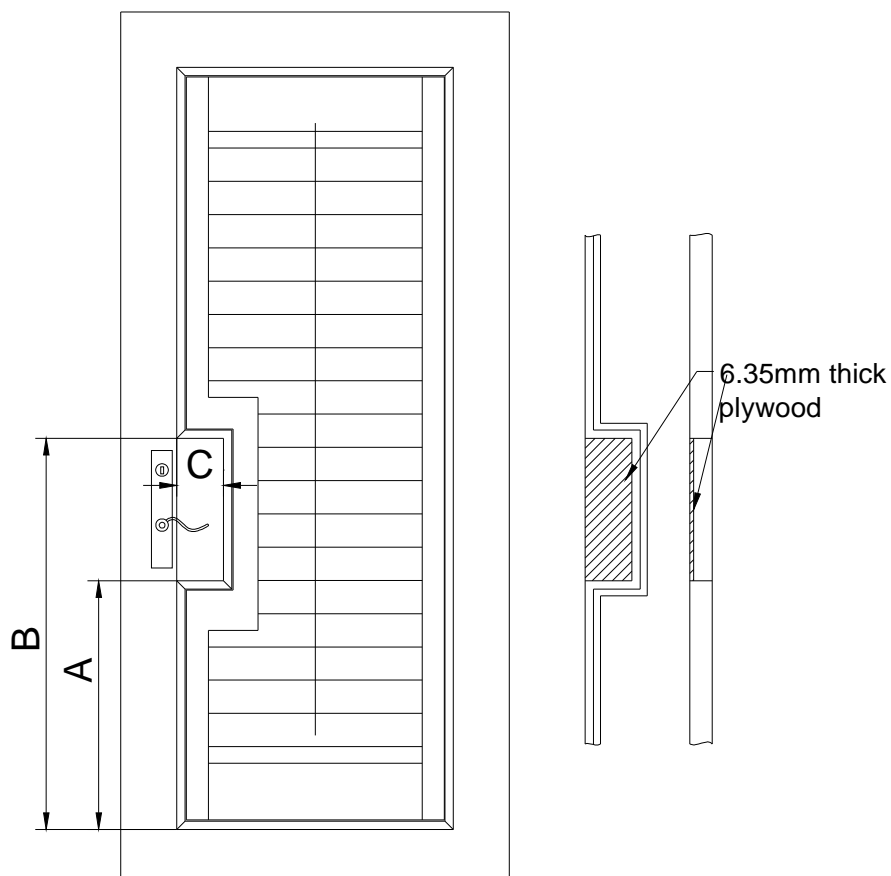
Cutout block piece will not go up to outside edge of L frame. It will go up to inside edge of L frame only.

(DIA I)

Date: \_\_\_\_\_ Sidemark: \_\_\_\_\_ Contact Person: \_\_\_\_\_  
 Phone #: \_\_\_\_\_  
 Office: \_\_\_\_\_ Job #: \_\_\_\_\_ Fax #: \_\_\_\_\_

## French Door Cutout Order Form

### Type C

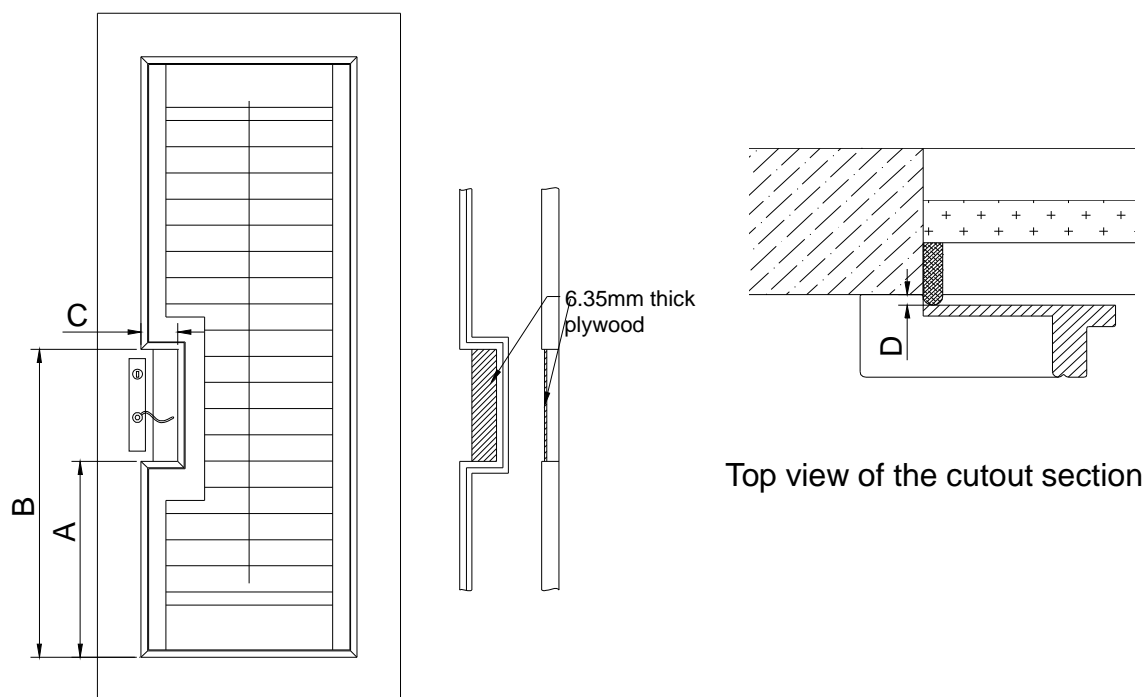


- A) Bottom of frame to bottom edge of cutout. \_\_\_\_\_
- B) Bottom of frame to top edge of cutout. \_\_\_\_\_
- C) Out edge of frame to into edge of frame. (Depth of cutout) \_\_\_\_\_
- D) Whether handle is on left or right side of the door. \_\_\_\_\_
- E) Whether frame with cutout-blocked required? \_\_\_\_\_

Date: \_\_\_\_\_ Sidemark: \_\_\_\_\_ Contact Person: \_\_\_\_\_  
 Office: \_\_\_\_\_ Job #: \_\_\_\_\_ Phone #: \_\_\_\_\_  
 Fax #: \_\_\_\_\_

## French Door Cutout Order Form

### Type D



- A) Bottom of frame to bottom edge of cutout. \_\_\_\_\_
- B) Bottom of frame to top edge of cutout. \_\_\_\_\_
- C) Out edge of frame to into edge of frame. (Depth of cutout) \_\_\_\_\_
- D) Projection of the trim. \_\_\_\_\_
- E) Whether handle is on left or right side of the door. \_\_\_\_\_
- F) Whether frame with cutout-blocked required? \_\_\_\_\_