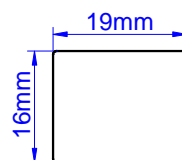
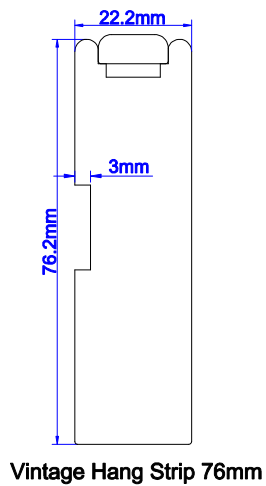


Blindtex Custom Shutter Specification				
Code	ERSS-001	Shutter + Shade specification	Page	1 / 3
Edition	D		Compiler	
Effective Date	2017/07/11		Reviewer	

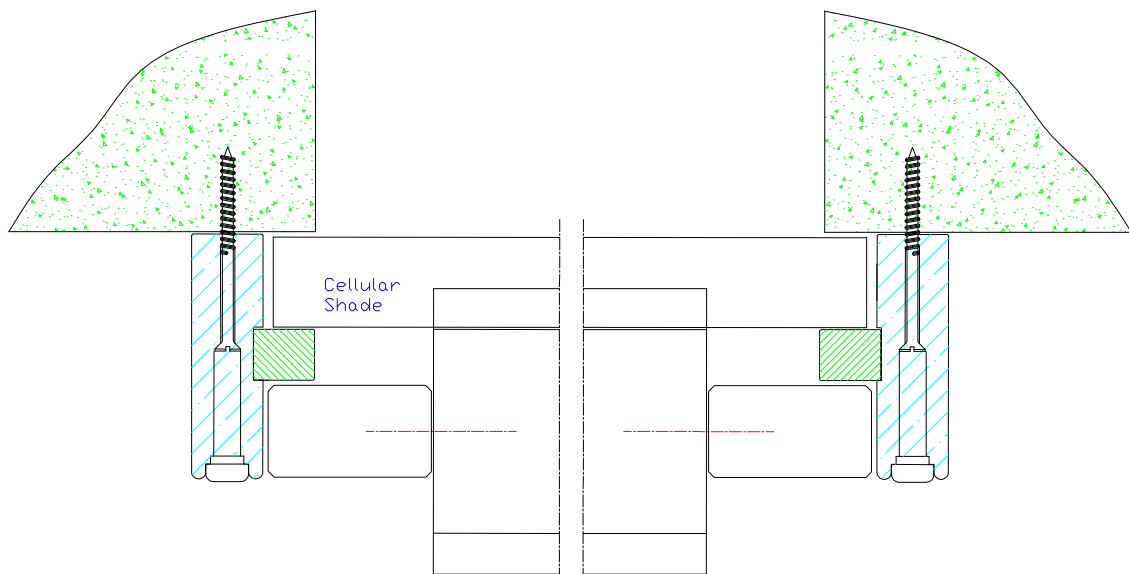
Framed Shutter combined with 25mm Corded Honeycomb Blind

1. Frame option:



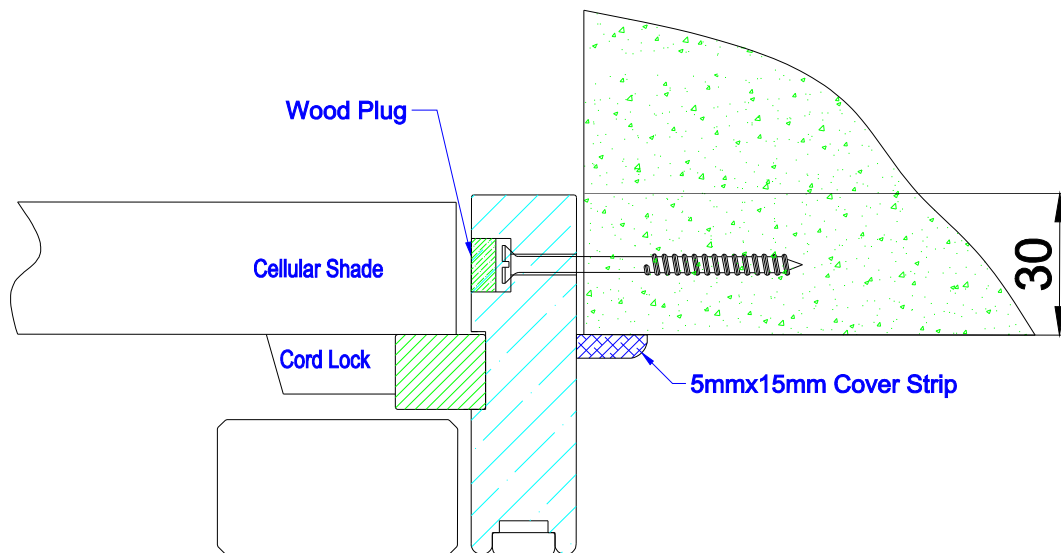
Light block

2. Frame mounting:
Outside Mount:

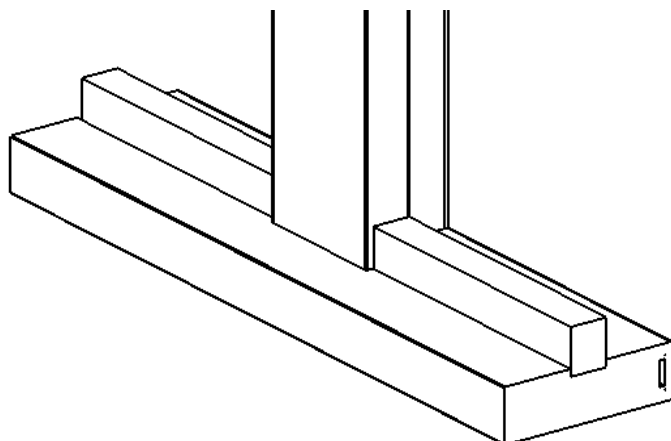


Blindtex Custom Shutter Specification				
Code	ERSS-001	Shutter + Shade specification	Page	2 / 3
Edition	D		Compiler	
Effective Date	2017/07/11		Reviewer	

Inside Mount: will require a minimum depth clearance 30mm.

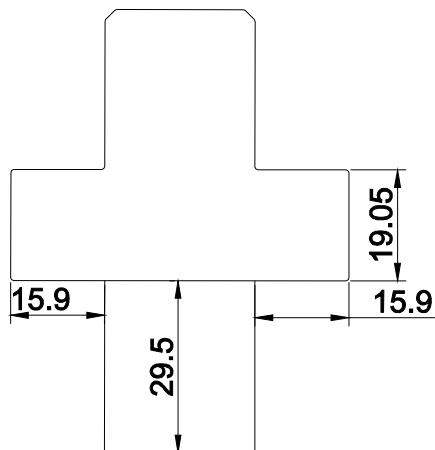


3. Number of frames
3 sided (top, left & right) and 4 sided.
4. Available shutters:
All rectangular shutters.
5. Available cellular shade:
25mm corded system cellular shade-Room Darkening.
* The cord cleats will be on the light block between the shutter and shade.
6. Size limit:
Follow the current shutter and cellular shade spec.
7. If there is T post, Corner/ Bay post, it has 2 conditions as below:
1). If the shade behind is for one whole piece, the light block depth is 19.05mm and the light block for top& bottom will be split, while both ends of T post, Corner/ Bay post will be cut flat. See picture below:



Blindtex Custom Shutter Specification				
Code	ERSS-001	Shutter + Shade specification	Page	3 / 3
Edition	D		Compiler	
Effective Date	2017/07/11		Reviewer	

- 2). If the shade behind is divided into several pieces by the T post, Corner/ Bay post, then T post, Corner/ Bay post need add 29.5mm build out at back for the standard frame depth. See picture below:



Please note that this option is not available for ABS program.

8. The Claim Limitation Date for Shipping Damage for Airfreight Orders:
For all airfreight orders with shipping damages, claims must be submitted within 1 week after the date of receipt.